

MANUALE RICAMBI - SPARE PARTS CATALOG

MINI TRASPORTATORE CINGOLATO **CARRY105 Electric Power**

CRAWLER COMPACT DUMPER **CARRY105 Electric Power**

numeri di serie a partire dal n°:

serial number from nr.:

MZ000010

USE OF THE PARTS CATALOG

1. Preface.

Illustrations and diagrams shown in the parts catalog are shown to the extent necessary to identify the part, but are not meant to serve as a detailed representation of the part. To order parts, refer to the itemization given below, then place your order with the servicing plant designated by KATO IMER.

2. How to read the Parts Catalog.

a) An index and table of contents list each item separately. Please, refer to the necessary sections.

b) Meanings of symbols preceding the parts number.

X Part cannot be supplied.

☆ Supplied as a separate part.

Part number is indicated in the remarks column.


△ Special order parts, which are manufactured after the order is received.


Detailed diagram provided separately. Sheet number indicated in the remarks column.


c) An asterisk preceding the part name indicates a compositional part required in part assembly. All subsequent multiple asterisks indicate parts that are structurally required for the assembly of the preceding part.


d) The quantity. In principle, indicates the number of parts required for one unit of machinery. For parts requiring assembly, the number of parts required to assembly one set is given.

e) Interchange ability of parts is shown as follows:

0750 729 UA  Change from part shown at the top to part shown below.

0750 744 UA  The new part is interchangeable with the old.

0750 659 UA  Change from part shown at the top to part shown below.

0750 669 UA  The new part is not interchangeable with the old.

f) Suitability for various machinery.

26127~ Part used in equipment numbered 26127 and equipment subsequently numbered.

26127~26169 Part used in equipment numbered 26127 through 26169.

g) Notes and meaning of abbreviations.

Sh.No. Sheet n. I.D. Inside diameter

L Length O.D. Outside diameter

t Thickness P. Pitch

W/ With AR As required (number required)

W/O Without

3. Engine part orders: Please order from your local sales distributor or engine manufacturer, using their catalog.

4. When placing an order for parts, please check that you have clearly specified the following: (1) machinery name, (2) machinery number, (3) parts number, (4) parts name and (5) quantity of parts you are ordering.

5. With regard to improvements to equipment, such modifications may be made without notice.

CONTENTS

CONTENUTI

LOWER MACHINE TELAIO BASSO	1
TOOLS ACCESSORI	2
HYDRAULIC PIPING IMPIANTO IDRAULICO	3
POWER UNIT UNITA' DI POTENZA	4
OPERATOR POSITION, COVER & RELATED PARTS POSTO GUIDA, CARTERATURE & RELATIVI ACCESSORI	5
HYDRAULIC INSTRUMENT STRUMENTAZIONE IDRAULICA	6
ELECTRIC SYSTEM IMPIANTO ELETTRICO	7
PARTS INDEX INDICE DELLE PARTI	8

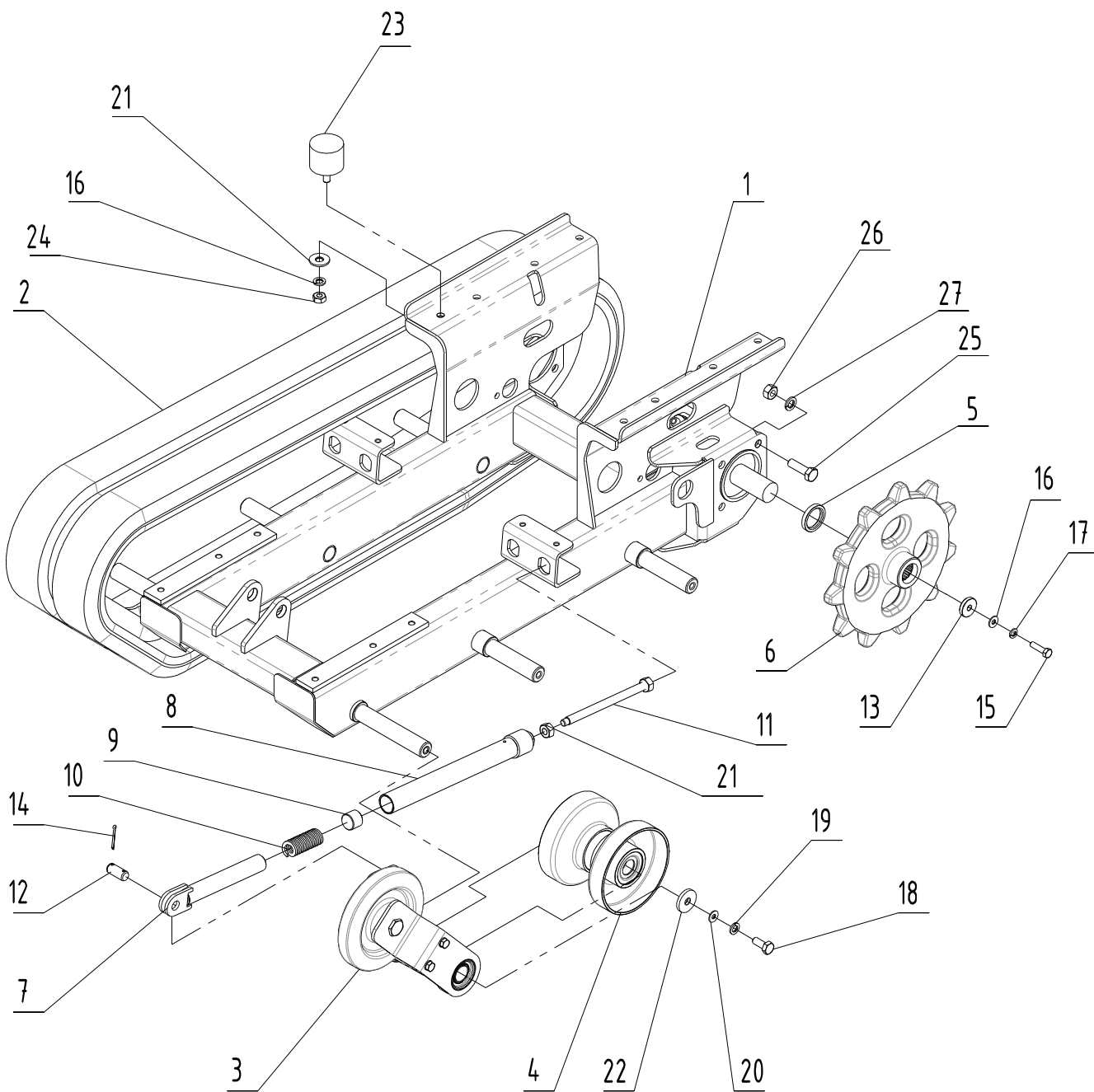
CARRY105 EP

INDEX INDICE		
DESCRIPTION DESCRIZIONE	SHEET No. SEZ. N°	PAGE PAGINA
LOWER MACHINE <i>TELAIO BASSO</i>		1
LOWER MACHINE ASS'Y <i>TELAIO BASSO</i>	1- 1 <input type="checkbox"/>	2
IDLER ASS'Y & LOWER ROLLER ASS'Y <i>MONTAGGIO RUOTA FOLLE E RULLO GUIDA-CINGOLO</i>	1- 2 <input type="checkbox"/>	4
TOOLS <i>ACCESSORI</i>		7
TOOLS SUPPORT WITH BUCKET <i>MONTAGGIO TELAIIO ACCESSORI CON BENNA</i>	2- 1 <input type="checkbox"/>	8
BLADE ATTACHEMENT ASS'Y <i>MONTAGGIO KIT PALA CARICATRICE</i>	2- 2 <input type="checkbox"/>	10
HYDRAULIC PIPING <i>IMPIANTO IDRAULICO</i>		13
HYDRAULIC PIPING ASS'Y (DOUBLE PUMP) <i>IMPIANTO IDRAULICO BASE (POMPA DOPPIA)</i>	3- 1 <input type="checkbox"/>	14
POWER UNIT <i>UNITA' DI POTENZA</i>		19
ELECTRIC MOTOR ASS'Y <i>MONTAGGIO MOTORE ELETTRICO</i>	4- 1 <input type="checkbox"/>	20
OPERATOR POSITION, COVER & RELATED PARTS <i>POSTO GUIDA, CARTERATURE & RELATIVI ACCESSORI</i>		23
OPERATOR POSITION & COVER <i>POSTO GUIDA & CARTERATURE</i>	5- 1a <input type="checkbox"/>	24
OPERATOR POSITION & COVER <i>POSTO GUIDA & CARTERATURE</i>	5- 1b <input type="checkbox"/>	28
NAME PLATE ASS'Y <i>ASSIEME ETICHETTE</i>	5- 2 <input type="checkbox"/>	32
HYDRAULIC INSTRUMENT <i>STRUMENTAZIONE IDRAULICA</i>		35
TOOLS CONTROL VALVE ASS'Y <i>MONTAGGIO DISTRIBUTORE ACCESSORI</i>	6- 1 <input type="checkbox"/>	36
ELECTRIC SYSTEM <i>IMPIANTO ELETTRICO</i>		39
ELECTRIC SYSTEM <i>IMPIANTO ELETTRICO</i>	7- 1a <input type="checkbox"/>	40
ELECTRIC SYSTEM <i>IMPIANTO ELETTRICO</i>	7- 1b <input type="checkbox"/>	44
PARTS INDEX <i>INDICE DELLE PARTI</i>		47

SECTION 1
SEZIONE 1

LOWER MACHINE
TELAIO BASSO

KATO IMER S.p.A.

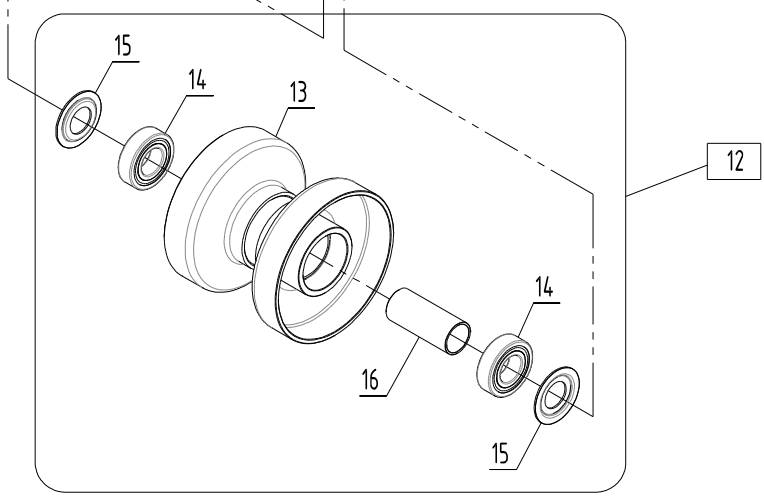
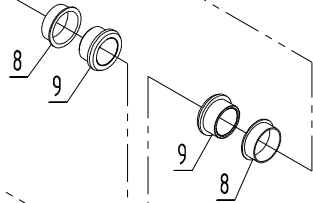
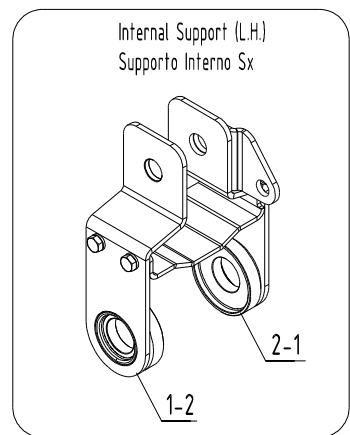
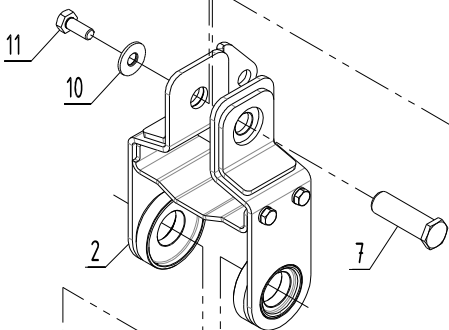
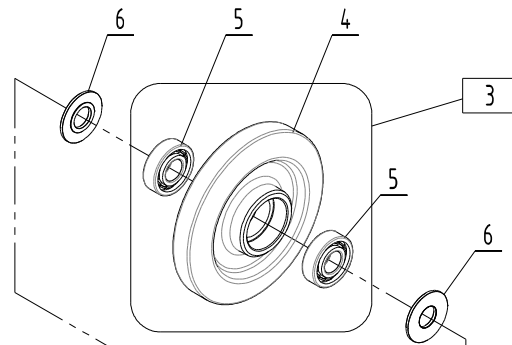
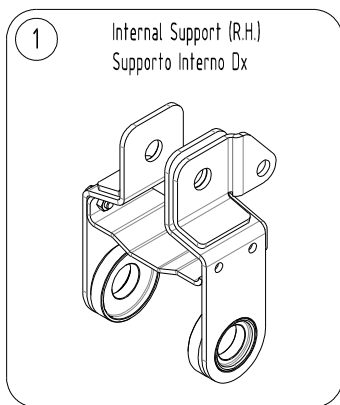
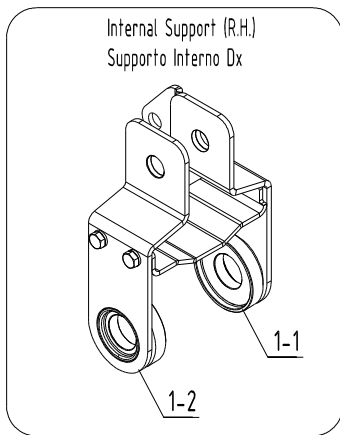


KEY No.	S	PART No.	DESCRIPTION	Q'TY	CH.	SERIAL No.	REMARKS
0	x	*****	Lower Machine Ass'y <i>Montaggio Telaio Basso</i>	1		MZ000010 ~	
1		2050402001	* Lower Machine <i>Telaio Basso</i>	1		MZ000010 ~	
2		1190300003	* Shoe, Rubber Crawler <i>Cingolo Gomma</i>	2		MZ000010 ~	
3		4041000493	* Idler Ass'y (L.H.) <i>Montaggio Ruota Folle Sx</i>	1		MZ000010 ~	Sh.No.1-2
3 - 1		4041000492	* Idler Ass'y (R.H.) <i>Montaggio Ruota Folle Dx</i>	1		MZ000010 ~	Sh.No.1-2
4		6050402001	* Lower, Roller Ass'y <i>Assemblaggio Rullo</i>	6		MZ000010 ~	Sh.No.1-2
5		2050204001	* Shim <i>Distanziale Motore Trazione</i>	2		MZ000010 ~	
6		2050206001	* Sprocket, Drive <i>Corona Dentata</i>	2		MZ000010 ~	
7		2050402010	* Front Tube <i>Tube Anteriore Tiro Cingolo</i>	2		MZ000010 ~	
8		2050402009	* Tube Assembly <i>Assieme Tube Tiro Cingolo</i>	2		MZ000010 ~	
9		2050404026	* Pusher, Spring <i>Cilindretto Spingi Molla</i>	2		MZ000010 ~	
10		1120403003	* Spring <i>Molla Ruota Folle</i>	2		MZ000010 ~	
11		2050402017	* Pin, Spring <i>Perno Filettato Spingi Molla</i>	2		MZ000010 ~	M12
12		2050404028	* Pin <i>Perno Collegamento Tiro Cingolo</i>	2		MZ000010 ~	
13		2050201040	* Washer <i>Rondella Corona Dentata</i>	2		MZ000010 ~	
14		1226458	* Pin, Cotter <i>Copiglia</i>	4		MZ000010 ~	D.3,2X32
15		1222037	* Bolt, Hex. <i>Vite TE</i>	2		MZ000010 ~	M8X30
16		1224083	* Washer, Flat <i>Rosetta Piana</i>	2		MZ000010 ~	M8
17		1224794	* Washer, Spring <i>Rosetta Grower</i>	2		MZ000010 ~	M8
18		1222061	* Bolt, Hex. <i>Vite TE</i>	6		MZ000010 ~	M10X25
19		1224801	* Washer, Spring <i>Rosetta Grower</i>	8		MZ000010 ~	M10
20		1224103	* Washer, Flat <i>Rosetta Piana</i>	6		MZ000010 ~	M10
21		1224104	* Washer, Flat <i>Rosetta Piana</i>	2		MZ000010 ~	M10
22		1090500010	* Washer, Special <i>Rosetta Speciale</i>	6		MZ000010 ~	M10
23		1220410050	* Rubber Stop <i>Piedino Paracolpi</i>	2		MZ000010 ~	
24		1223650	* Nut <i>Dado Esagonale</i>	2		MZ000010 ~	M10
25		1222914	* Bolt (H.T.), Hex. <i>Vite TE 10,9</i>	8		MZ000010 ~	M12X40
26		1223700	* Nut <i>Dado Esagonale</i>	10		MZ000010 ~	M12
27		1224803	* Washer, Spring <i>Rosetta Grower</i>	8		MZ000010 ~	M12

NOTE

01-01





KEY		PART No.	DESCRIPTION	Q'TY	CH.	SERIAL No.	REMARKS
No.	S						
0		4041000492	Idler Ass'y (R.H.) <i>Montaggio Ruota Folle Dx</i>	1		MZ000010 ~	
0 - 1		4041000493	Idler Ass'y (L.H.) <i>Montaggio Ruota Folle Sx</i>	1		MZ000010 ~	
1		2050403027	* Complete Bracket (R.H.) <i>Telaio Supporto Dx Completo</i>	1		MZ000010 ~	
1 - 1	x	2050402028	* Internal Bracket (R.H.) <i>Supporto Interno Ruota Folle Dx</i>	1		MZ000010 ~	
1 - 2	x	2050402005	* External Bracket <i>Supporto esterno Ruota Folle</i>	1		MZ000010 ~	
2		2050403028	* Complete Bracket (L.H.) <i>Telaio Supporto Sx Completo</i>	1		MZ000010 ~	
2 - 1	x	2050402004	* Internal Bracket (L.H.) <i>Supporto Interno Ruota Folle Sx</i>	1		MZ000010 ~	
3		6050202001	* Idler Ass'y, Front <i>Preassemblaggio Ruota Folle</i>	1		MZ000010 ~	
4		2050206000	* * Idler, Front <i>Ruota Folle</i>	1		MZ000010 ~	
5		1100123020	* * Bearing, Ball <i>Cuscinetto a Sfere</i>	2		MZ000010 ~	
6		2050204007	* Shim <i>Distanziale</i>	2		MZ000010 ~	
7		2050404008	* Shaft <i>Perno Ruota Folle</i>	1		MZ000010 ~	
8		1101130000	* Bushing Iglidur <i>Boccola Iglidur</i>	2		MZ000010 ~	
9		2050404006	* Shim <i>Distanziale Tiro Cingolo</i>	2		MZ000010 ~	
10		1224104	* Washer, Flat <i>Rosetta Piana</i>	1		MZ000010 ~	M10
11		1222061	* Bolt, Hex. <i>Vite TE</i>	1		MZ000010 ~	M10X25
12		6050402001	Lower Roller Ass'y <i>Assemblaggio Rullo</i>	6		MZ000010 ~	
13		2050402002	* Roller, Guide <i>Rullo Saldato</i>	1		MZ000010 ~	
14		1100123025	* Bearing, Ball <i>Cuscinetto a Sfere</i>	2		MZ000010 ~	D.52
15		2050401019	* Bearing Protection <i>Protezione Cuscinetto</i>	2		MZ000010 ~	
16		2050404007	* Shim <i>Distanziatore Cuscinetti</i>	1		MZ000010 ~	

NOTE

01-02

CARRY105 EP

IDLER ASS'Y & LOWER ROLLER ASS'Y
MONTAGGIO RUOTA FOLLE E RULLO GUIDA-CINGOLO

REV. No ②

1

- 5 -

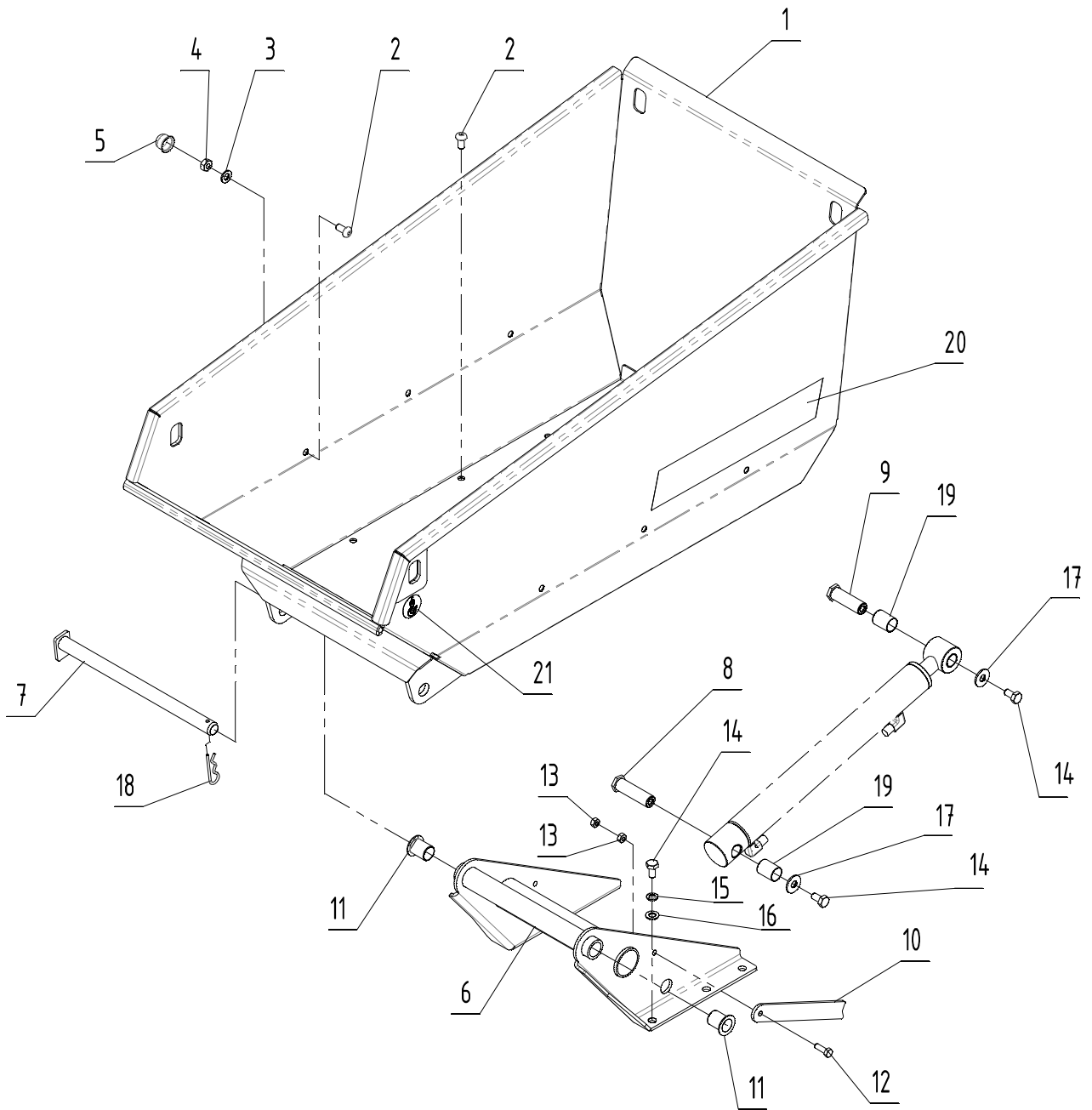
SHEET No. 1-2



SECTION 2
SEZIONE 2

TOOLS
ACCESSORI

KATO IMER S.p.A.

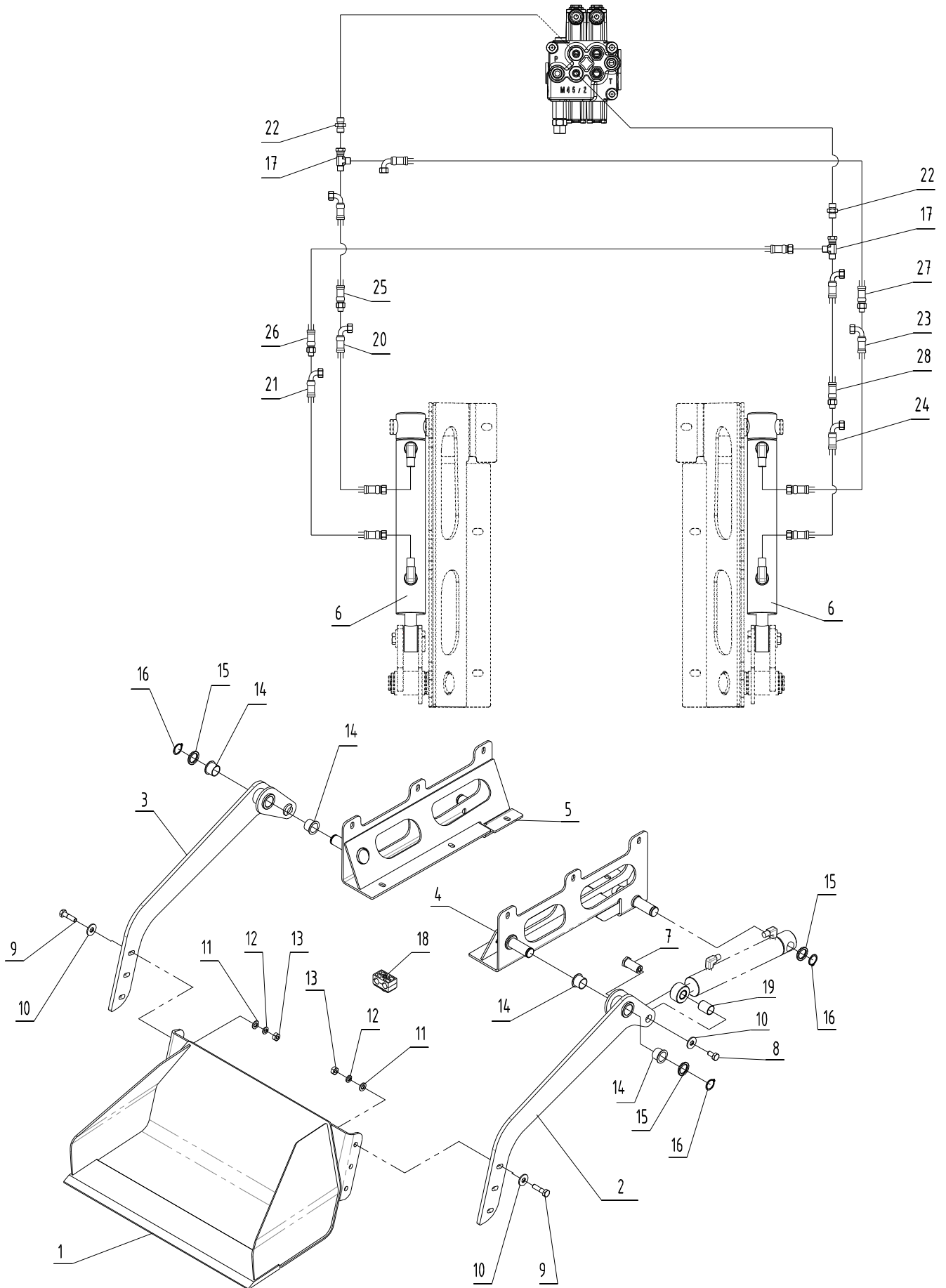


KEY No.	S	PART No.	DESCRIPTION	Q'TY	CH.	SERIAL No.	REMARKS
0		5180301000	Bucket Ass'y <i>Montaggio Cassone</i>	1		MZ000010 ~	
0 - 1		3050401002	Tools Support Ass'y <i>Montaggio Telaio Accessori</i>	1		MZ000010 ~	
1		2050402018	* Bucket <i>Cassone Saldato</i>	1		MZ000010 ~	
2		1222404	* Bolt <i>Vite TBEI</i>	12		MZ000010 ~	M10x20
3		1224103	* Washer, Flat <i>Rosetta Piana</i>	12		MZ000010 ~	M10
4		1223650	* Nut <i>Dado Esagonale</i>	18		MZ000010 ~	M10
5		3250778	* Cover Nut <i>Copri Dado</i>	12		MZ000010 ~	
6		2050402003	* Hinge <i>Cerniera Cassone</i>	1		MZ000010 ~	
7		2050402029	* Hinge Pin <i>Perno Cerniera</i>	1		MZ000010 ~	
8		2050404032	* Cylinder Pin <i>Perno Cilindro Al Telaio</i>	1		MZ000010 ~	
9		2050404033	* Cylinder Pin <i>Perno Cilindro Al Cassone</i>	1		MZ000010 ~	
10		2050401125	* Bracket <i>Staffa Blocco Cassone</i>	1		MZ000010 ~	
11		1101130002	* Bushing Iglidur <i>Boccola Iglidur</i>	2		MZ000010 ~	
12		1222034	* Bolt, Hex. <i>Vite TE</i>	1		MZ000010 ~	M8x25
13		1223570	* Nut <i>Dado Esagonale</i>	2		MZ000010 ~	M8
14		1222059	* Bolt, Hex. <i>Vite TE</i>	8		MZ000010 ~	M10x20
15		1224801	* Washer, Spring <i>Rosetta Grower</i>	12		MZ000010 ~	M10
16		1224103	* Washer, Flat <i>Rosetta Piana</i>	12		MZ000010 ~	M10
17		1224104	* Washer, Flat <i>Rosetta Piana</i>	14		MZ000010 ~	M10
18		1226474	* Pin, Cotter <i>Copiglia sagomata</i>	1		MZ000010 ~	D.4
19		4041000490	* Bushing <i>Boccola</i>	4		MZ000010 ~	
• 20		2020807039	* Name Plate (IHIMER 80 - Shadow) <i>Etich. Ades. Ihimer 80 Ombra</i>	2	↳	MZ000010 ~ *****	
•		2034207055	* Name Plate (KATO IMER 450x60) <i>Etich. Ades. KATO IMER 450x60</i>	2	↳	MZ00***** ~	
21		3262192	* Name Plate (Lifting) <i>Etich. Ades. Punti Aggancio Sollevamento</i>	2		MZ000010 ~	

NOTE

02-01





KEY No.	S	PART No.	DESCRIPTION	Q'TY	CH.	SERIAL No.	REMARKS
0		5180301001	Blade Ass'y <i>Pala Autocaricante Completa</i>	1		MZ000010 ~	
1		2050402011	* Blade <i>Benna Saldata</i>	1		MZ000010 ~	
2		2050402012	* Arm (L.H.) <i>Braccio Sinistro Pala</i>	1		MZ000010 ~	
3		2050402013	* Arm (R.H.) <i>Braccio Destro Pala</i>	1		MZ000010 ~	
4		2050402014	* Support Plate (L.H.) <i>Piastra Dx Supporto Pala</i>	1		MZ000010 ~	
5		2050402015	* Support Plate (R.H.) <i>Piastra Sx Supporto Pala</i>	1		MZ000010 ~	
6		2050408002	* Cylinder <i>Cilindro Pala</i>	2		MZ000010 ~ *0063	
		2050408019	* Cylinder <i>Cilindro Pala</i>	2		MZ000064 ~	
6 - 1		4041000524	* * Kit, Seal <i>Kit Guarnizioni Cilindro</i>	2		MZ000010 ~ *0063	
		4041000527	* * Kit, Seal <i>Kit Guarnizioni Cilindro</i>	2		MZ000064 ~	
7		2050404021	* Cylinder Pin <i>Perno Cilindro Pala</i>	2		MZ000010 ~	
8		1222087	* Bolt (H.T.), Hex. <i>Vite TE</i>	2		MZ000010 ~	M10x20
9		1222906	* Bolt (H.T.), Hex. <i>Vite TE</i>	6		MZ000010 ~	M10x40
10		1224104	* Washer, Flat <i>Rosetta Piana</i>	8		MZ000010 ~	M10
11		1224103	* Washer, Flat <i>Rosetta Piana</i>	6		MZ000010 ~	M10
12		1224801	* Washer, Spring <i>Rosetta Grower</i>	6		MZ000010 ~	M10
13		1223650	* Nut <i>Dado Esagonale</i>	6		MZ000010 ~	M10
14		1101130001	* Bushing Iglidur <i>Boccola Iglidur</i>	4		MZ000010 ~	
15		1090600025	* Shim <i>Distanziale</i>	2		MZ000010 ~	
16		1110110025	* Seeger Shaft <i>Seeger Per Albero</i>	4		MZ000010 ~	
17		1140440001	* Tee <i>Raccordo T</i>	4		MZ000010 ~	1/4"
18		1110910016	* Clamp, Tube <i>Collare Ferma Tubo</i>	2		MZ000010 ~	
19		4041000490	* Bushing <i>Boccola</i>	2		MZ000010 ~	
20		1130712021	* Hose Ass'y (Blue) <i>Tubo Idraulico (Blu)</i>	1		MZ000010 ~	1/4"x1720
21		1130712022	* Hose Ass'y (White) <i>Tubo Idraulico (Bianco)</i>	1		MZ000010 ~	1/4"x1720
22		1220625	* Adapter <i>Nipples Riduzione</i>	2		MZ000010 ~	3/8- 1/4"
23		1130712023	* Hose Ass'y (Red) <i>Tubo Idraulico (Rosso)</i>	1		MZ000010 ~	1/4"x1720
24		1130712024	* Hose Ass'y (Grey) <i>Tubo Idraulico (Grigio)</i>	1		MZ000010 ~	1/4"x1720
25		1130712018	* Hose Ass'y (Blue) <i>Tubo Idraulico (Blu)</i>	1		MZ000010 ~	1/4"x900
26		1130712017	* Hose Ass'y (White) <i>Tubo Idraulico (Bianco)</i>	1		MZ000010 ~	1/4"x800
27		1130712019	* Hose Ass'y (Red) <i>Tubo Idraulico (Rosso)</i>	1		MZ000010 ~	1/4"x900
28		1130712020	* Hose Ass'y (Grey) <i>Tubo Idraulico (Grigio)</i>	1		MZ000010 ~	1/4"x900

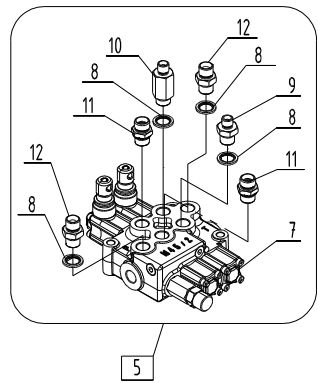
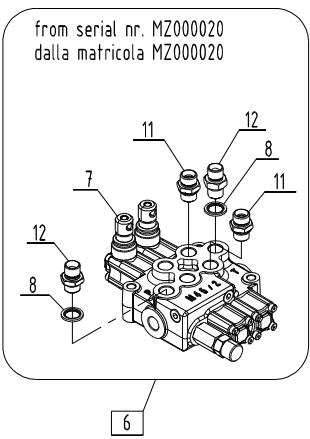
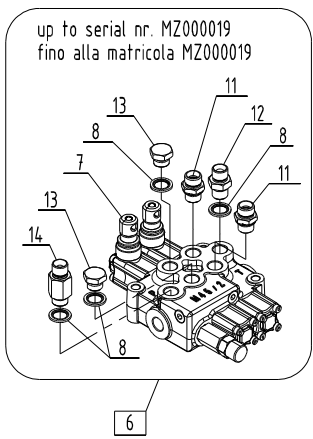
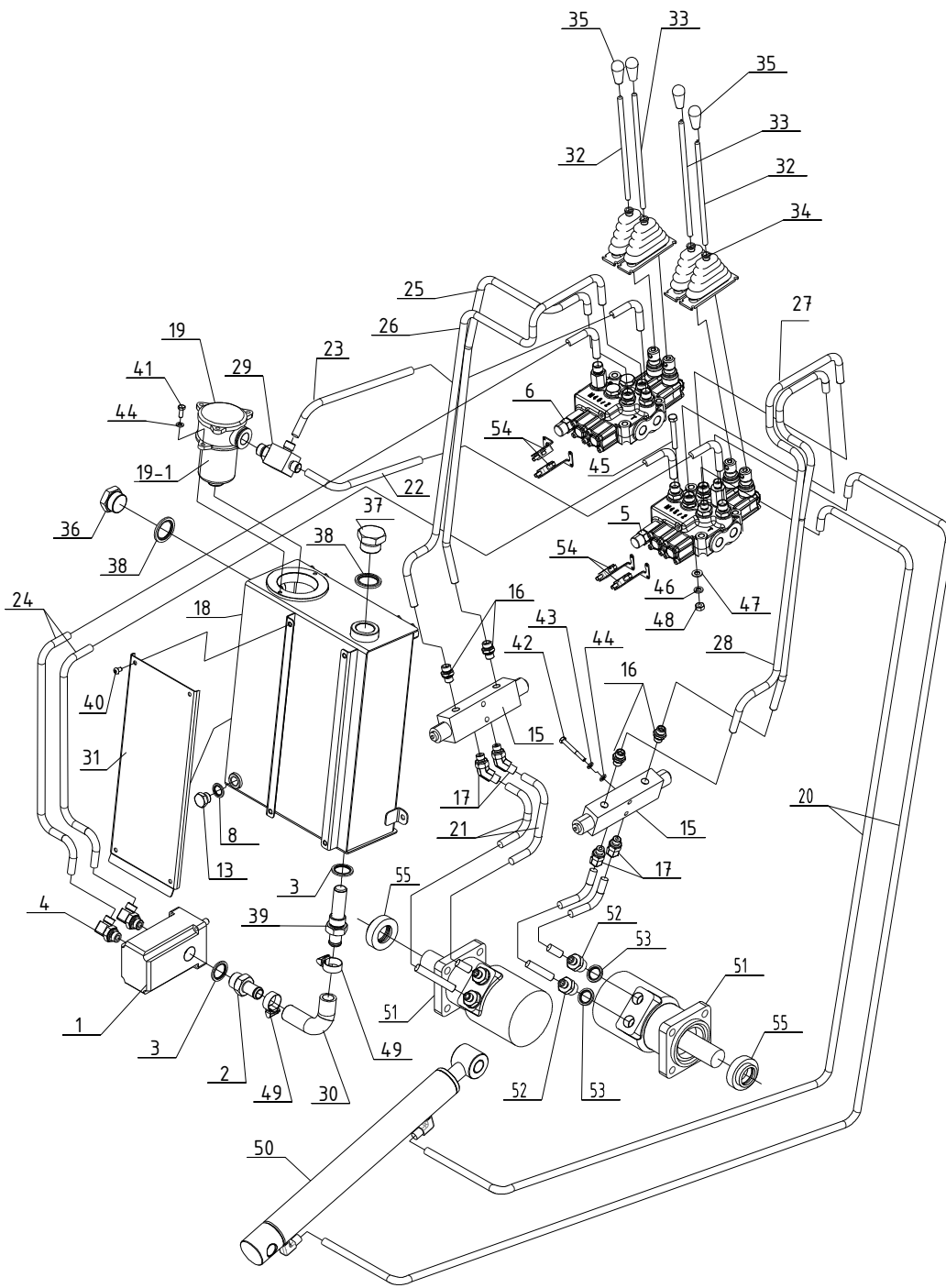
NOTE

02-02

SECTION 3
SEZIONE 3

HYDRAULIC PIPING
IMPIANTO IDRAULICO

KATO IMER S.p.A.



KEY No.	S	PART No.	DESCRIPTION	Q'TY	CH.	SERIAL No.	REMARKS
0	x	3050405008	Piping Ass'y <i>Mont. Impianto Idraulico</i>	1		MZ000010 ~	
0 -	x	3050405009	Pump Ass'y <i>Montaggio Pompa Doppia</i>	1		MZ000010 ~	
0 -	x	3050405004	Traction Valve Ass'y <i>Montaggio Valvola Controllo Trazione</i>	1		MZ000010 ~	
1		1150211012	* Pump <i>Pompa Doppia</i>	1		MZ000010 ~	
2		1141015002	* Connector <i>Porta Gomma</i>	1		MZ000010 ~	3/4"
3		1220138	* Washer, Seal <i>Rondella GM</i>	3		MZ000010 ~	3/4"
4		1140213300	* Adapter <i>Raccordo 90°</i>	2		MZ000010 ~	3/8"
5		3050205002	* Control Valve Ass'y (L.H.) <i>Montaggio Distributore 2 Elem. Sx</i>	1		MZ000010 ~	
6		3050205003	* Control Valve Ass'y (R.H.) <i>Montaggio Distributore 2 Elem. Dx</i>	1		MZ000010 ~	
7		1150620004	* * Control Valve <i>Distributore 2 Leve</i>	2		MZ000010 ~	M45/2
• 8		3251846	* Washer, Seal <i>Rondella GM</i>	9		MZ000010 ~ *000019	3/8"
•		3251846	* Washer, Seal <i>Rondella GM</i>	7		MZ000020 ~	3/8"
9		1220625	* Nipple <i>Nipples Riduzione</i>	1		MZ000010 ~	3/8" - 1/4"
10		1140713200	* Adapter <i>Raccordo Oleodinamico Diritto</i>	1		MZ000010 ~	3/8"
11		1221277	* Nipple + Seal <i>Nipples + Guarnizione</i>	4		MZ000010 ~	3/8" D=12
• 12		1220625	* Nipple <i>Nipples Riduzione</i>	3		MZ000010 ~ *000019	3/8"
•		1220608	* Nipple <i>Nipples Riduzione</i>	4		MZ000020 ~	3/8"
• 13		1220019	* Plug <i>Tappo Maschio</i>	3		MZ000010 ~ *000019	PF3/8"
•		1220019	* Plug <i>Tappo Maschio</i>	1		MZ000020 ~	PF3/8"
• 14		1140713300	* Adapter <i>Raccordo Oleodinamico Diritto</i>	1		MZ000010 ~ *000019	3/8"
15		1150360004	* Traction Valve <i>Valvola Controllo Trazione</i>	2		MZ000010 ~	
16		1140124200	* Nipple + Seal <i>Nipples Dritto + Guarnizione</i>	4		MZ000010 ~	1/4" D=12
17		1140312200	* Adapter <i>Adattatore Or. 45°</i>	4		MZ000010 ~	1/4"
18		2050402023	* Oil Tank <i>Serbatoio Olio</i>	1		MZ000010 ~	
19		1150510003	* Oil Filter <i>Filto Olio</i>	1		MZ000010 ~	OMTF-09-F25
• 19 - 1		4041000498	* * Cartridge <i>Elemento Filtrante</i>	1		MZ000010 ~	F025
20		1130722014	* Hose Ass'y <i>Tubo Idraulico</i>	2		MZ000010 ~	L=1790
21		1130722016	* Hose Ass'y <i>Tubo Idraulico</i>	4		MZ000010 ~	L=270
22		1130723005	* Hose Ass'y <i>Tubo Idraulico</i>	1		MZ000010 ~	L=335
23		1130723006	* Hose Ass'y <i>Tubo Idraulico</i>	1		MZ000010 ~	L=200
24		1130723007	* Hose Ass'y <i>Tubo Idraulico</i>	2		MZ000010 ~	L=1070
25		2050408007	* Tube <i>Tubo Mandata Motore Dx</i>	1		MZ000010 ~	
26		2050408008	* Tube <i>Tubo Ritorno Motore Dx</i>	1		MZ000010 ~	

NOTE

03-01(p1)

HYDRAULIC PIPING ASS'Y (DOUBLE PUMP)

REV. No ②

3

CARRY105 EP

IMPIANTO IDRAULICO BASE (POMPA DOPPIA)

- 15 -

SHEET No. 3-1



KEY No.	S	PART No.	DESCRIPTION	Q'TY	CH.	SERIAL No.	REMARKS
27		2050408009	* Tube <i>Tube Mandata Motore Sx</i>	1		MZ000010 ~	
28		2050408010	* Tube <i>Tube Ritorno Motore Sx</i>	1		MZ000010 ~	
29		2050404011	* Manifold <i>Blocchetto Scarichi</i>	1		MZ000010 ~	
30		2050408003	* Hose <i>Tube Aspirazione Olio</i>	1		MZ000010 ~	
31		2050401134	* Cover <i>Carter Ferma Tubi</i>	1		MZ000010 ~	
32		2050204008	* Lever (Short) <i>Leva Corta Distributore</i>	2		MZ000010 ~	L=210
33		2050204009	* Lever (Long) <i>Leva Lunga Distributore</i>	2		MZ000010 ~	L=235
34		1220300000	* Boot <i>Soffietto Gomma</i>	4		MZ000010 ~	
35		1190900009	* Grip <i>Impugnatura</i>	4		MZ000010 ~	
36		1221153	* Oil Gauge <i>Indicatore Livello Olio</i>	1		MZ000010 ~	1"
37		1140616000	* Plug <i>Tappo Maschio</i>	1		MZ000010 ~	1"
38		1220136	* Washer, Seal <i>Rondella GM</i>	2		MZ000010 ~	1"
39		1141015003	* Connector <i>Porta Gomma Con Filtro</i>	1		MZ000010 ~	3/4"
40		3206224	* Bolt <i>Vite TBEI</i>	4		MZ000010 ~	M6X10
41		1222006	* Bolt <i>Vite TE</i>	4		MZ000010 ~	M6X16
42		1222013	* Bolt <i>Vite TE</i>	2		MZ000010 ~	M6X50
43		1224791	* Washer, Spring <i>Rosetta Grower</i>	4		MZ000010 ~	M6
44		1224070	* Washer, Flat <i>Rosetta Piana</i>	6		MZ000010 ~	M6
45		1222030	* Bolt <i>Vite TE</i>	6		MZ000010 ~	M8X60
46		1224794	* Washer, Spring <i>Rosetta Grower</i>	6		MZ000010 ~	M8
47		1224083	* Washer, Flat <i>Rosetta Piana</i>	6		MZ000010 ~	M8
48		1223570	* Nut <i>Dado</i>	6		MZ000010 ~	M8
49		1225744	* Clamp, Tube <i>Fascetta</i>	2		MZ000010 ~	
50		2050408001	* Cylinder Ass'y, Tilting <i>Cilindro Ribaltamento</i>	1		MZ000010 ~ *0060	
		2050408018	* Cylinder Ass'y, Tilting <i>Cilindro Ribaltamento</i>	1		MZ000061 ~	
50 - 1		4041000523	* * Kit, Seal <i>Kit Guarnizioni Cilindro</i>	1		MZ000010 ~ *0060	
		4041000526	* * Kit, Seal <i>Kit Guarnizioni Cilindro</i>	1		MZ000061 ~	
51		1150100005	* Motor Ass'y, Traction <i>Motore di Trazione</i>	2		MZ000010 ~ *0051	
		1150100009	* Motor Ass'y, Traction <i>Motore di Trazione</i>	2		MZ000052 ~	
52		1220615	* Nipples <i>Nipples</i>	4		MZ000010 ~	1/2" - 1/4"
53		1220140	* Washer Seal <i>Rondella G.M.</i>	4		MZ000010 ~	1/2"
54		1170630000	* Microswitch <i>Microinterruttore</i>	4		MZ000010 ~	
55		4041000506	* Sealing Kit <i>Kit Tenute Motore di Trazione</i>	2		MZ000010 ~	

NOTE

03-01(p2)

HYDRAULIC PIPING ASS'Y (DOUBLE PUMP)

IMPIANTO IDRAULICO BASE (POMPA DOPPIA)

REV. No ②

3

CARRY105 EP

- 16 -

SHEET No. 3-1



KEY No.	S	PART No.	DESCRIPTION	Q'TY	CH.	SERIAL No.	REMARKS
• 55		4041000506	* Sealing Kit <i>Kit Tenute Motore di Trazione</i>	2		MZ000010 ~ *0051	
•		4041000516	* Sealing Kit <i>Kit Tenute Motore di Trazione</i>	2		MZ000052 ~	

NOTE

03-01(p3)

CARRY105 EP

HYDRAULIC PIPING ASS'Y (DOUBLE PUMP)
 IMPIANTO IDRAULICO BASE (POMPA DOPPIA)

- 17 -

REV. No ②

SHEET No. 3-1

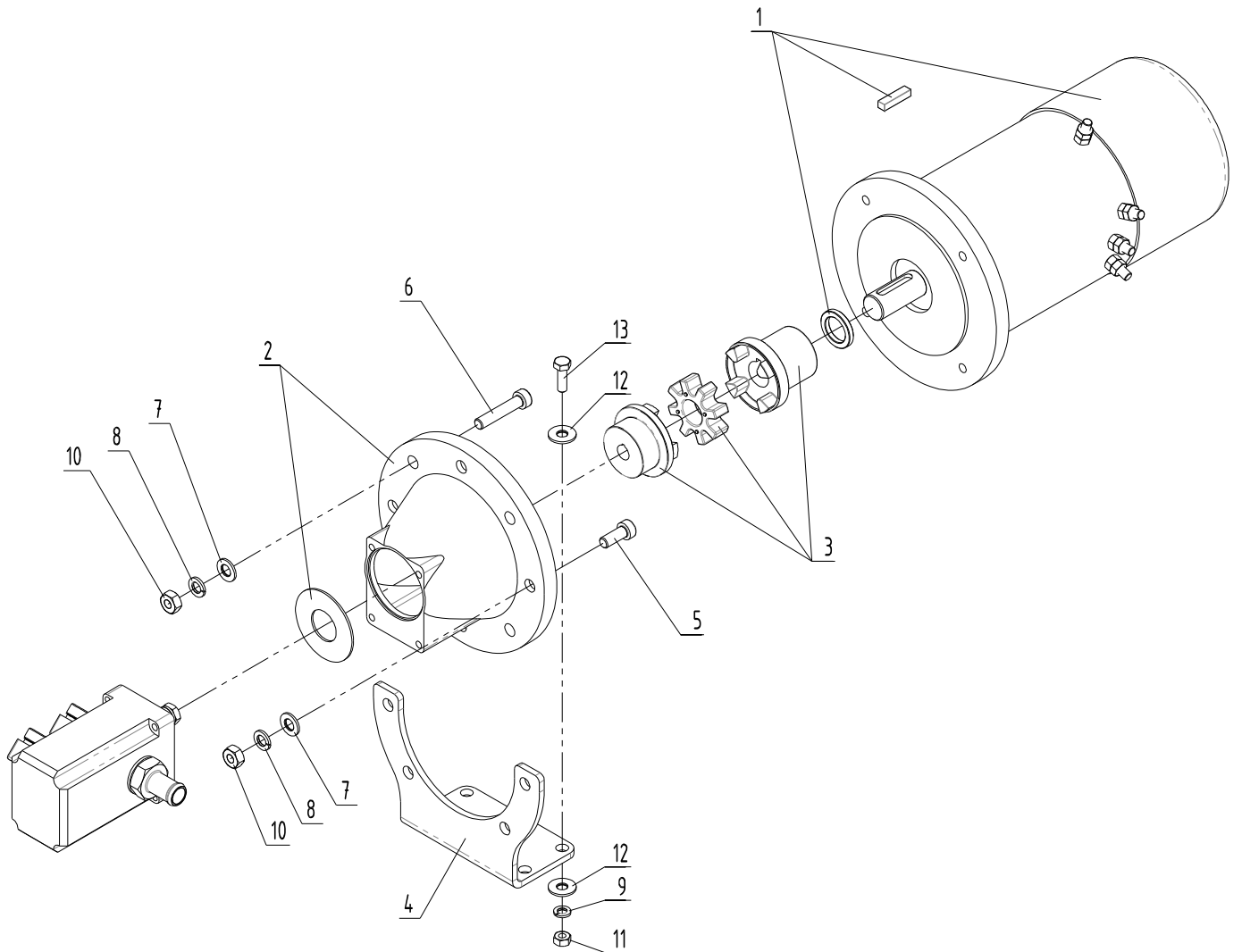
3



SECTION 4
SEZIONE 4

POWER UNIT
UNITA' DI POTENZA

KATO IMER S.p.A.



KEY		PART No.	DESCRIPTION	Q'TY	CH.	SERIAL No.	REMARKS
No.	S						
0	x	3050403002	Electric Motor Ass'y <i>Montaggio Motore Elettrico</i>	1		MZ000010 ~	
0 - 1	x	3050405009	Pump Ass'y <i>Montaggio Pompa Doppia</i>	1		MZ000010 ~	
1		1170101000	* Electric Motor <i>Motore Elettrico</i>	1		MZ000010 ~	B5/90 kW 2,2
2		1171500000	* Flange <i>Lanterna</i>	1		MZ000010 ~	LE2003+RC1-30
3		1171500001	* Joint <i>Giunto per Lanterna LE2003</i>	1		MZ000010 ~	ND9A
4		2050401135	* Bracket <i>Staffa Motore Elettrico</i>	1		MZ000010 ~	
5		1222270	* Bolt <i>Vite TCEI</i>	2		MZ000010 ~	M10X25
6		1222276	* Bolt <i>Vite TCEI</i>	4		MZ000010 ~	M10X50
7		1224103	* Washer, Flat <i>Rosetta Piana</i>	6		MZ000010 ~	M10
8		1224801	* Washer, Spring <i>Rosetta Grower</i>	6		MZ000010 ~	M10
9		1224794	* Washer, Spring <i>Rosetta Grower</i>	4		MZ000010 ~	M8
10		1223650	* Nut <i>Dado</i>	6		MZ000010 ~	M10
11		1223570	* Nut <i>Dado</i>	4		MZ000010 ~	M8
12		1224085	* Washer, Flat <i>Rosetta Piana</i>	8		MZ000010 ~	D.8X24
13		1222034	* Bolt <i>Vite TE</i>	4		MZ000010 ~	M8X25

NOTE

04-01

CARRY105 EP

ELECTRIC MOTOR ASS'Y
MONTAGGIO MOTORE ELETTRICO

- 21 -

REV. No ①

SHEET No. 4-1

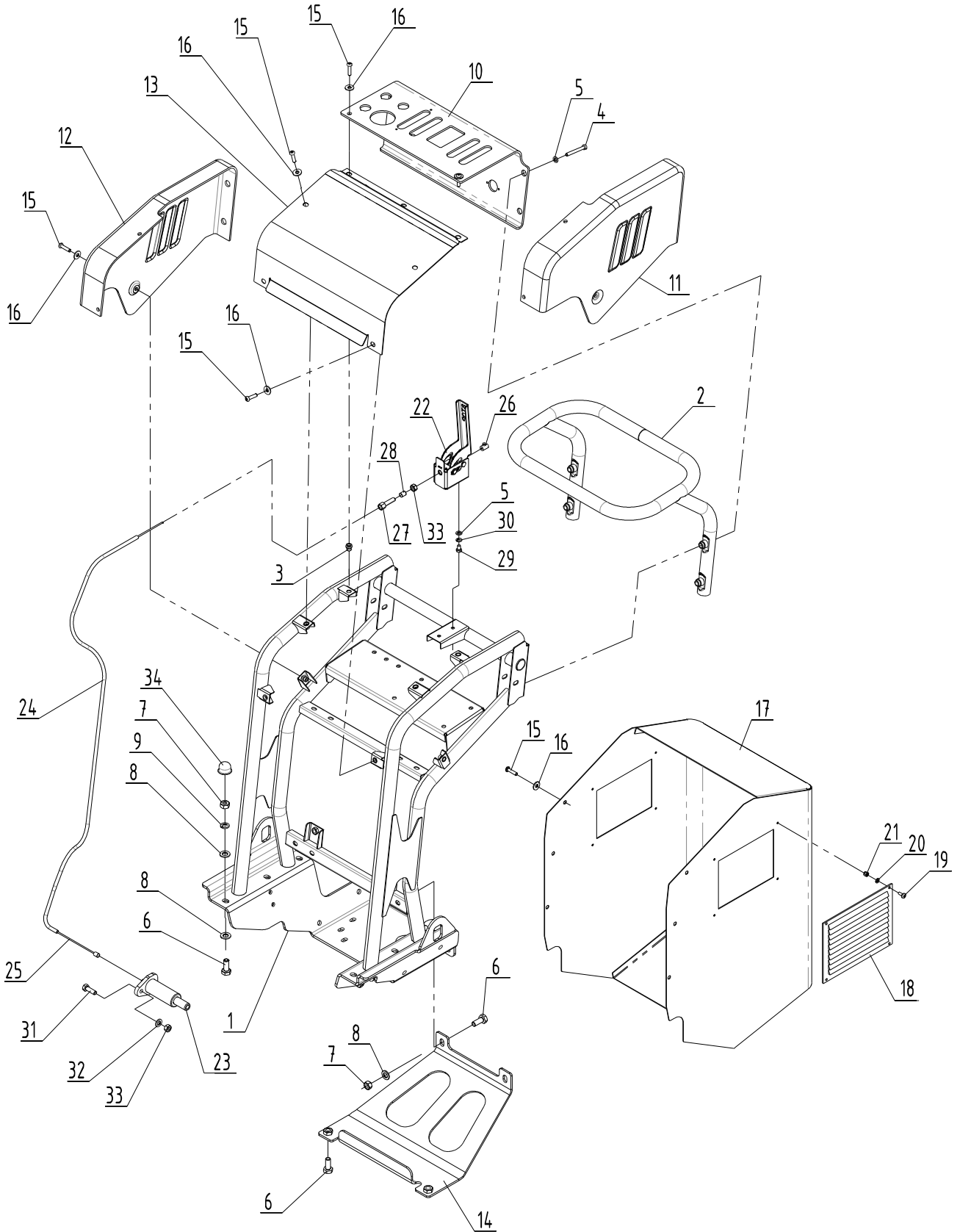
4



SECTION 5
SEZIONE 5

OPERATOR POSITION, COVER & RELATED PARTS
POSTO GUIDA, CARTERATURE E RELATIVI ACCESSORI

KATO IMER S.p.A.



KEY		PART No.	DESCRIPTION	Q'TY	CH.	SERIAL No.	REMARKS
No.	S						
0	x	3050401001	Operator Place Ass'y <i>Montaggio Posto Guida</i>	1		MZ000010 ~ *000024	
0 - 1	x	3050407001	Cover Ass'y <i>Montaggio Carter</i>	1		MZ000010 ~ *000024	
0 - 2		3050408000	Brake Ass'y <i>Montaggio Freno</i>	1		MZ000010 ~ *000024	
1		2050402007	* Operator Place Lower <i>Telaio Posto Guida</i>	1		MZ000010 ~ *000024	
2		2050402016	* Operator handle <i>Maniglia Operatore</i>	1		MZ000010 ~ *000024	
3		1081401006	* Threaded Insert <i>Inserto Filettato</i>	12		MZ000010 ~ *000024	M6
4		1222238	* Bolt <i>VITE TCEI</i>	4		MZ000010 ~ *000024	M6x50
5		1224070	* Washer, Flat <i>Rosetta Piana</i>	6		MZ000010 ~ *000024	M6
6		1222061	* Bolt <i>Vite TE</i>	10		MZ000010 ~ *000024	M10x25
7		1223650	* Nut <i>Dado</i>	8		MZ000010 ~ *000024	M10
8		1224103	* Washer, Flat <i>Rosetta Piana</i>	14		MZ000010 ~ *000024	M10
9		1224801	* Washer, Spring <i>Rosetta Grower</i>	6		MZ000010 ~ *000024	M10
10		2050410004	* Cover <i>Copertura Comandi 4 elem.</i>	1		MZ000010 ~ *000024	
11		2050410002	* Cover, Side (L.H.) <i>Carter Laterale Sx.</i>	1		MZ000010 ~ *000024	
12		2050410003	* Cover, Side (R.H.) <i>Carter Laterale Dx.</i>	1		MZ000010 ~ *000024	
13		2050401030	* Cover <i>Carter Distributori</i>	1		MZ000010 ~ *000024	
14		2050402006	* Lower Cover <i>Carter Inferiore</i>	1		MZ000010 ~ *000024	
15		1040106025	* Bolt <i>Vite TBEI</i>	14		MZ000010 ~ *000024	M6x25
16		1224074	* Washer, Flat <i>Rosetta Piana</i>	14		MZ000010 ~ *000024	D.6x18
17		2050402038	* Rear Cover <i>Carter Posteriore</i>	1		MZ000010 ~ *000024	
18		1190200000	* Grid <i>Griglia Aereazione</i>	1		MZ000010 ~ *000024	
19		1222412	* Bolt <i>Vite TCEI</i>	8		MZ000010 ~ *000024	M5x12
20		3242338	* Washer, Flat <i>Rosetta Piana</i>	3		MZ000010 ~ *000024	M5
21		1223915	* Nut <i>Dado</i>	1		MZ000010 ~ *000024	M6
22		2050403002	* Brake Lever <i>Assieme Leva Freno</i>	1		MZ000010 ~ *000024	
23		2050403007	* Brake Cylinder <i>Assieme Cilindro Freno</i>	1		MZ000010 ~ *000024	
24		1239464	* Sheath <i>Guaina Passacavo</i>	1		MZ000010 ~ *000024	D.7
25		1110800008	* Cable <i>Cavo Acciaio</i>	1		MZ000010 ~ *000024	D.2,5 L. 1350
26		1120820100	* Clamp <i>Morsetto</i>	1		MZ000010 ~ *000024	
27		1120825300	* Set Screw <i>Registro</i>	1		MZ000010 ~ *000024	D.2,5 M8
28		1120825303	* Terminal <i>Terminale per Guaina</i>	2		MZ000010 ~ *000024	
29		1222002	* Bolt <i>Vite TE</i>	2		MZ000010 ~ *000024	M6x10
30		1224791	* Washer, Spring <i>Rosetta Grower</i>	2		MZ000010 ~ *000024	M6

NOTE

05-01-a(p1)

OPERATOR POSITION & COVER
POSTO GUIDA & CARTERATURE

CARRY105 EP

REV. No ①

5

- 25 -

SHEET No. 5-1-a

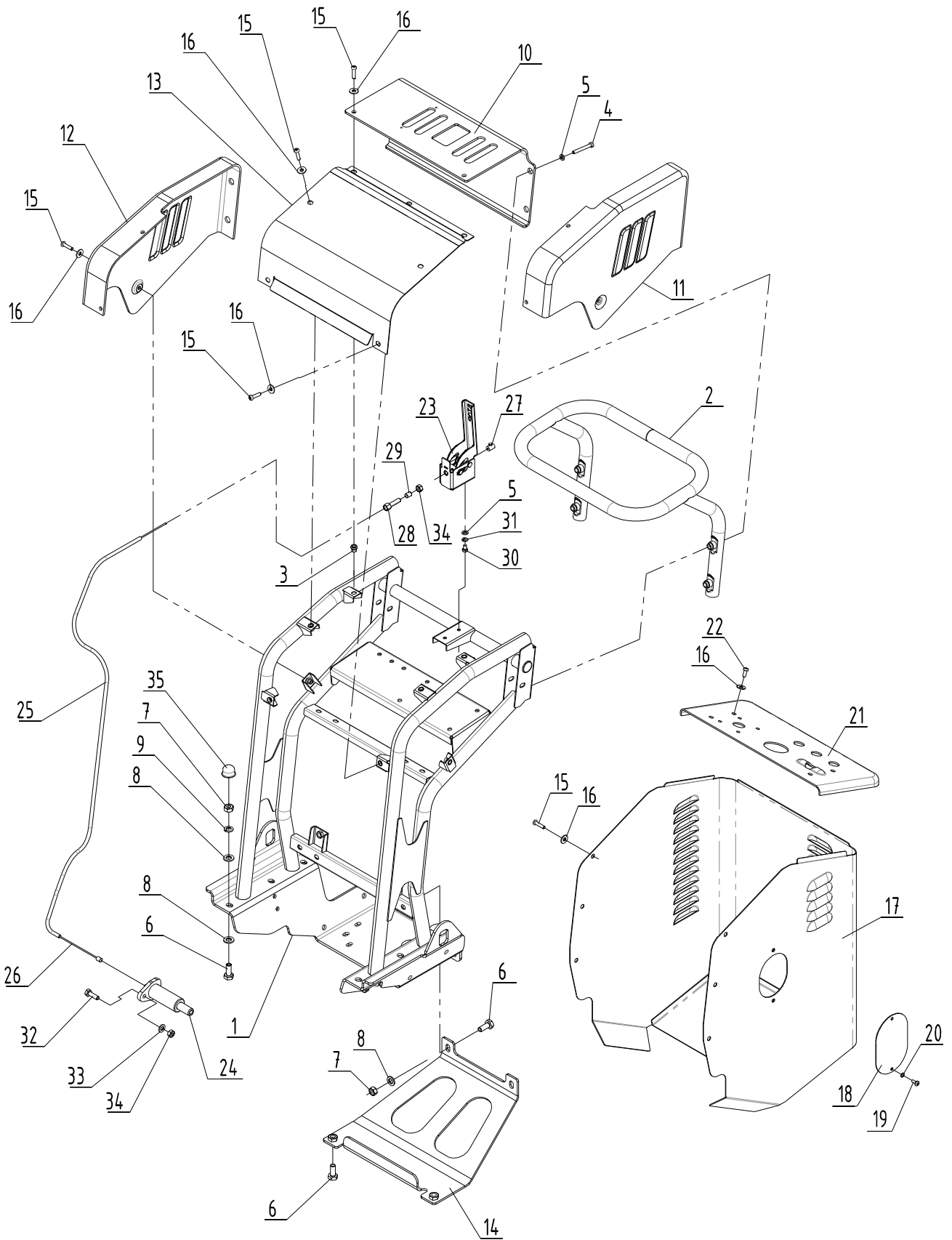


KEY		PART No.	DESCRIPTION	Q'TY	CH.	SERIAL No.	REMARKS
No.	S						
31		1222034	* Bolt <i>Vite TE</i>	1		MZ000010 ~ *000024	M8X25
32		1224083	* Washer, Flat <i>Rosetta Piana</i>	1		MZ000010 ~ *000024	M8
33		1223570	* Nut <i>Dado</i>	2		MZ000010 ~ *000024	M8
34		3250778	* Cover Nut <i>Copri Dado</i>	6		MZ000010 ~ *000024	M10

NOTE

05-01-a(p2)





KEY		PART No.	DESCRIPTION	Q'TY	CH.	SERIAL No.	REMARKS
No.	S						
0	x	3050401001	Operator Place Ass'y <i>Montaggio Posto Guida</i>	1		MZ000025 ~	
0 - 1	x	3050407001	Cover Ass'y <i>Montaggio Carter</i>	1		MZ000025 ~	
0 - 2		3050408000	Brake Ass'y <i>Montaggio Freno</i>	1		MZ000025 ~	
1		2050402007	* Operator Place Lower <i>Telaio Posto Guida</i>	1		MZ000025 ~	
2		2050402016	* Operator handle <i>Maniglia Operatore</i>	1		MZ000025 ~	
3		1081401006	* Threaded Insert <i>Inserto Filettato</i>	12		MZ000025 ~	M6
4		1222238	* Bolt <i>VITE TCEI</i>	4		MZ000025 ~	M6x50
5		1224070	* Washer, Flat <i>Rosetta Piana</i>	6		MZ000025 ~	M6
6		1222061	* Bolt <i>Vite TE</i>	10		MZ000025 ~	M10x25
7		1223650	* Nut <i>Dado</i>	8		MZ000025 ~	M10
8		1224103	* Washer, Flat <i>Rosetta Piana</i>	14		MZ000025 ~	M10
9		1224801	* Washer, Spring <i>Rosetta Grower</i>	6		MZ000025 ~	M10
10		2050410001	* Cover <i>Copertura Comandi 4 elem.</i>	1		MZ000025 ~	
11		2050410002	* Cover, Side (L.H.) <i>Carter Laterale Sx.</i>	1		MZ000025 ~	
12		2050410003	* Cover, Side (R.H.) <i>Carter Laterale Dx.</i>	1		MZ000025 ~	
13		2050401030	* Cover <i>Carter Distributori</i>	1		MZ000025 ~	
14		2050402006	* Lower Cover <i>Carter Inferiore</i>	1		MZ000025 ~	
15		1040106025	* Bolt <i>Vite TBEI</i>	14		MZ000025 ~	M6x25
16		1224074	* Washer, Flat <i>Rosetta Piana</i>	18		MZ000025 ~	D.6x18
17		2050402042	* Rear Cover <i>Carter Posteriore</i>	1		MZ000025 ~	
18		2050401161	* Cover <i>Carter Controllo Diagnostica</i>	1		MZ000025 ~	
19		1222845	* Bolt <i>Vite TCBC</i>	2		MZ000025 ~	M5x12
20		1224780	* Washer, Spring <i>Rosetta Grower</i>	2		MZ000025 ~	M5
21		2050410013	* Cover <i>Carter Consolle Elettrica</i>	1		MZ000025 ~	
22		3292381	* Bolt <i>Vite TBEI</i>	4		MZ000025 ~	M6x15
23		2050403002	* Brake Lever <i>Assieme Leva Freno</i>	1		MZ000025 ~	
24		2050403007	* Brake Cylinder <i>Assieme Cilindro Freno</i>	1		MZ000025 ~	
25		1239464	* Sheath <i>Guaina Passacavo</i>	1		MZ000025 ~	D.7
26		1110800008	* Cable <i>Cavo Acciaio</i>	1		MZ000025 ~	D.2,5 L. 1350
27		1120820100	* Clamp <i>Morsetto</i>	1		MZ000025 ~	
28		1120825300	* Set Screw <i>Registro</i>	1		MZ000025 ~	D.2,5 M8
29		1120825303	* Terminal <i>Terminale per Guaina</i>	2		MZ000025 ~	
30		1222002	* Bolt <i>Vite TE</i>	2		MZ000025 ~	M6x10

NOTE

05-01-b(p1)

OPERATOR POSITION & COVER
POSTO GUIDA & CARTERATURE

CARRY105 EP

REV. No ①

5

- 29 -

SHEET No. 5-1-b

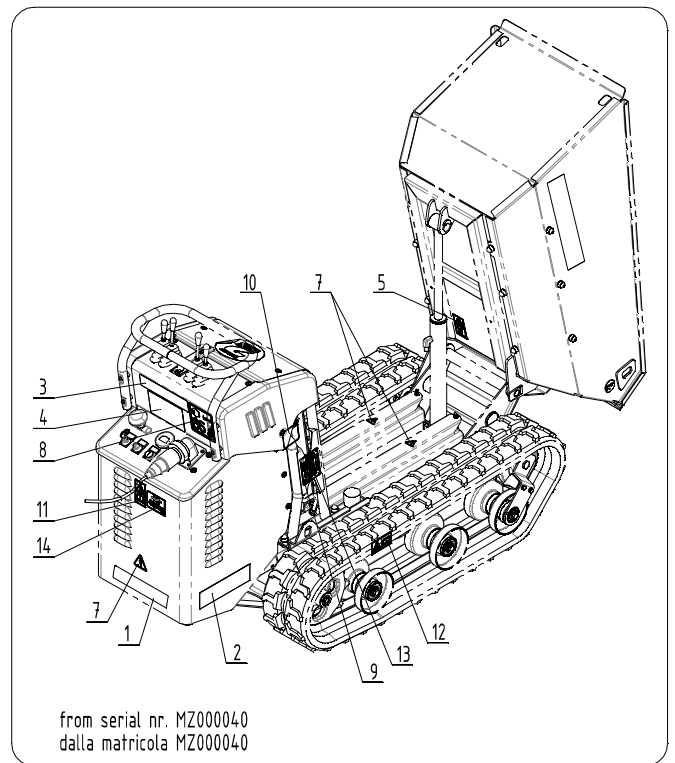
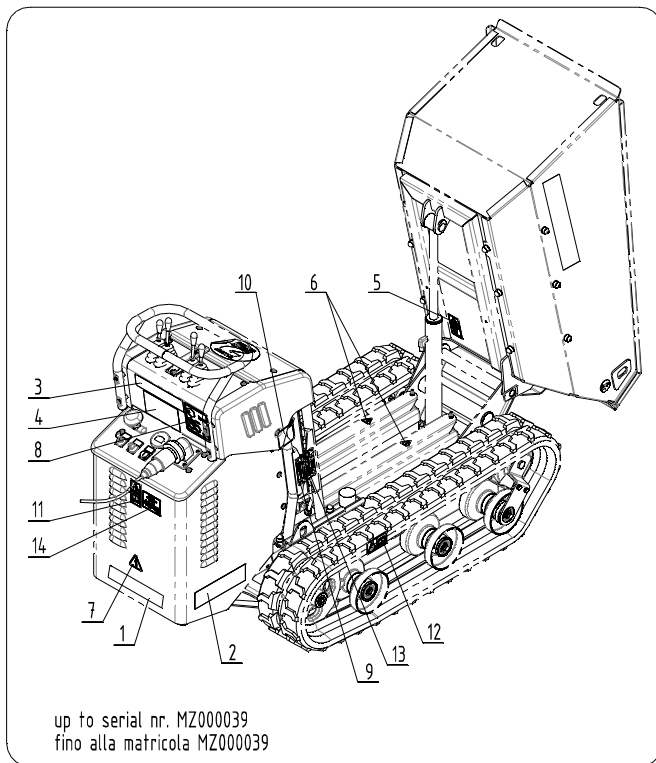
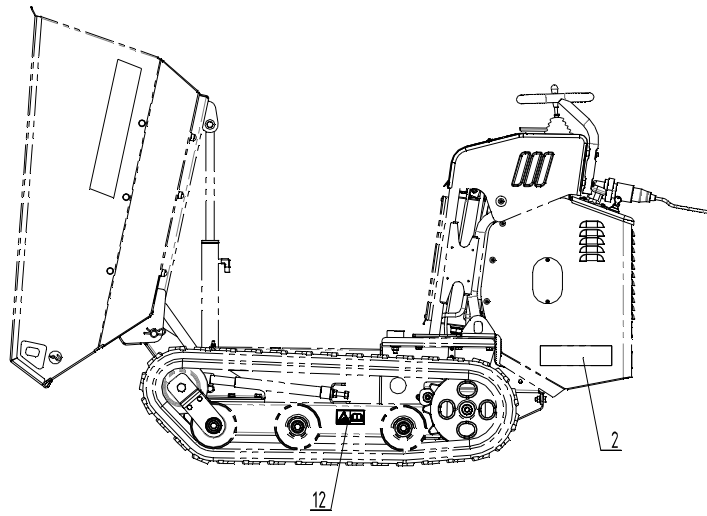


KEY		PART No.	DESCRIPTION	Q'TY	CH.	SERIAL No.	REMARKS
No.	S						
31		1224791	* Washer, Spring <i>Rosetta Grower</i>	2		MZ000025 ~	M6
32		1222034	* Bolt <i>Vite TE</i>	1		MZ000025 ~	M8X25
33		1224083	* Washer, Flat <i>Rosetta Piana</i>	1		MZ000025 ~	M8
34		1223570	* Nut <i>Dado</i>	2		MZ000025 ~	M8
35		3250778	* Cover Nut <i>Copri Dado</i>	6		MZ000025 ~	M10

NOTE

05-01-b(p2)





KEY No.	S	PART No.	DESCRIPTION	Q'TY	CH.	SERIAL No.	REMARKS
0	x	3050411003	Plate Ass'y, Name <i>Montaggio Kit Etichette</i>	1		MZ000010 ~	
• 1		2020007002	* Name Plate (IHIMER - Shadow) <i>Etichetta.Adesiva Logo IHIMER Ombra</i>	1		MZ000010 ~ *****	
•		2030807137	* Name Plate (KATO IMER 300x40) <i>Etich. Ades. KATO IMER 300x40</i>	1		MZ00***** ~	
2		2050407008	* Name Plate For Carry 105EP <i>Etichetta Adesiva Logo Carry 105EP</i>	2		MZ000010 ~	
3		2050407004	* Name Plate (Control and Operating) <i>Etichetta Adesiva Comandi 4 Leve</i>	1		MZ000010 ~	
4		2050407016	* Name Plate (Recharge Instruction) <i>Etichetta Adesiva Istruzioni Ricarica</i>	1		MZ000010 ~	
5		2050207014	* Name Plate (Locking Tools Safety) <i>Etichetta Adesiva Sicura Bloccaggio Portattrezzi</i>	1		MZ000010 ~	
• 6		2050407018	* Name Plate (Electrical Danger) <i>Etichetta Adesiva Pericolo Elettrico H=38</i>	2		MZ000010 ~ *00039	
• 7		2050407019	* Name Plate (Electrical Danger) <i>Etichetta Adesiva Pericolo Elettrico H=50</i>	1		MZ000010 ~ *00039	
•		2050407019	* Name Plate (Electrical Danger) <i>Etichetta Adesiva Pericolo Elettrico H=50</i>	3		MZ000040 ~	
8		2050407022	* Name Plate (LWA 85) <i>Etichetta Adesiva Rumore (LWA 85)</i>	1		MZ000010 ~	
9		1224982	* Rivet <i>Rivetto</i>	4		MZ000010 ~	D.5x10
10		1288971	* Name Plate (Oil) <i>Etichetta Adesiva Rifornimento Olio</i>	1		MZ000010 ~	
11		3251653	* Name Plate (Danger) <i>Etichetta Sicurezza Pericolo Generico</i>	1		MZ000010 ~	
12		3251657	* Name Plate (Tracks) <i>Etichetta Pericolo Movimento Cingoli</i>	2		MZ000010 ~	
• 13		3292730	* Name Plate (Serial N°) <i>Targa Alluminio Modello IHIMER</i>	1		MZ000010 ~ *****	
•		2000007006	* Name Plate (Serial N°) <i>Targ.Allum.Modello</i>	1		MZ00***** ~	
14		2050407023	* Name Plate (Max. Load) <i>Etichetta Adesiva Carico Massimo</i>	1		MZ000010 ~	

NOTE

05-02

CARRY105 EP

NAME PLATE ASS'Y
ASSIEME ETICHETTE

- 33 -

REV. No ②

SHEET No. 5-2

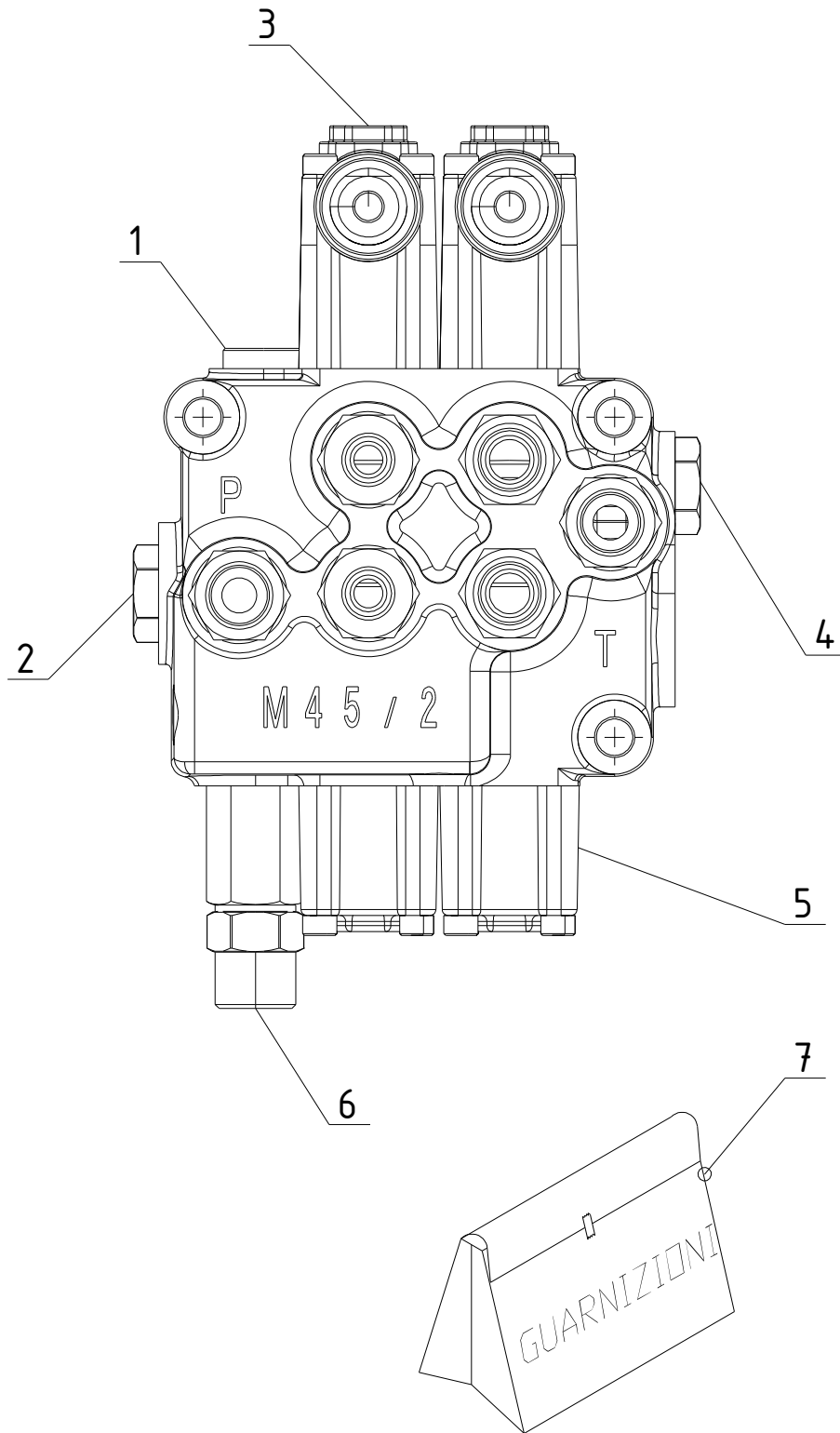
5



SECTION 6
SEZIONE 6

HYDRAULIC INSTRUMENT
STRUMENTAZIONE IDRAULICA

KATO IMER S.p.A.



KEY		PART No.	DESCRIPTION	Q'TY	CH.	SERIAL No.	REMARKS
No.	S						
1		1150620004	Valve Ass'y Control <i>Distributore 2 Leve</i>	1		MZ000010 ~	
2		4041000451	* Retainer Valve Kit <i>Kit Valvola di Ritegno</i>	1		MZ000010 ~	
3		4041000452	* Protected Lever Kit <i>Kit Leva Protetta</i>	2		MZ000010 ~	
4		4041000453	* Plug Kit <i>Kit Tappo</i>	2		MZ000010 ~	3/8"
5		4041000454	* Spool Return Action <i>Richiamo Corsore</i>	2		MZ000010 ~	
6		4041000491	* Valve Overload <i>Valvola Sovraccarico</i>	1		MZ000010 ~	140 bar
7		4041000456	* Kit Seal <i>Kit Guarnizioni</i>	1		MZ000010 ~	

NOTE

06-01

CARRY105 EP

TOOLS CONTROL VALVE ASS'Y
MONTAGGIO DISTRIBUTORE ACCESSORI

- 37 -

REV. No ①

SHEET No. 6-1

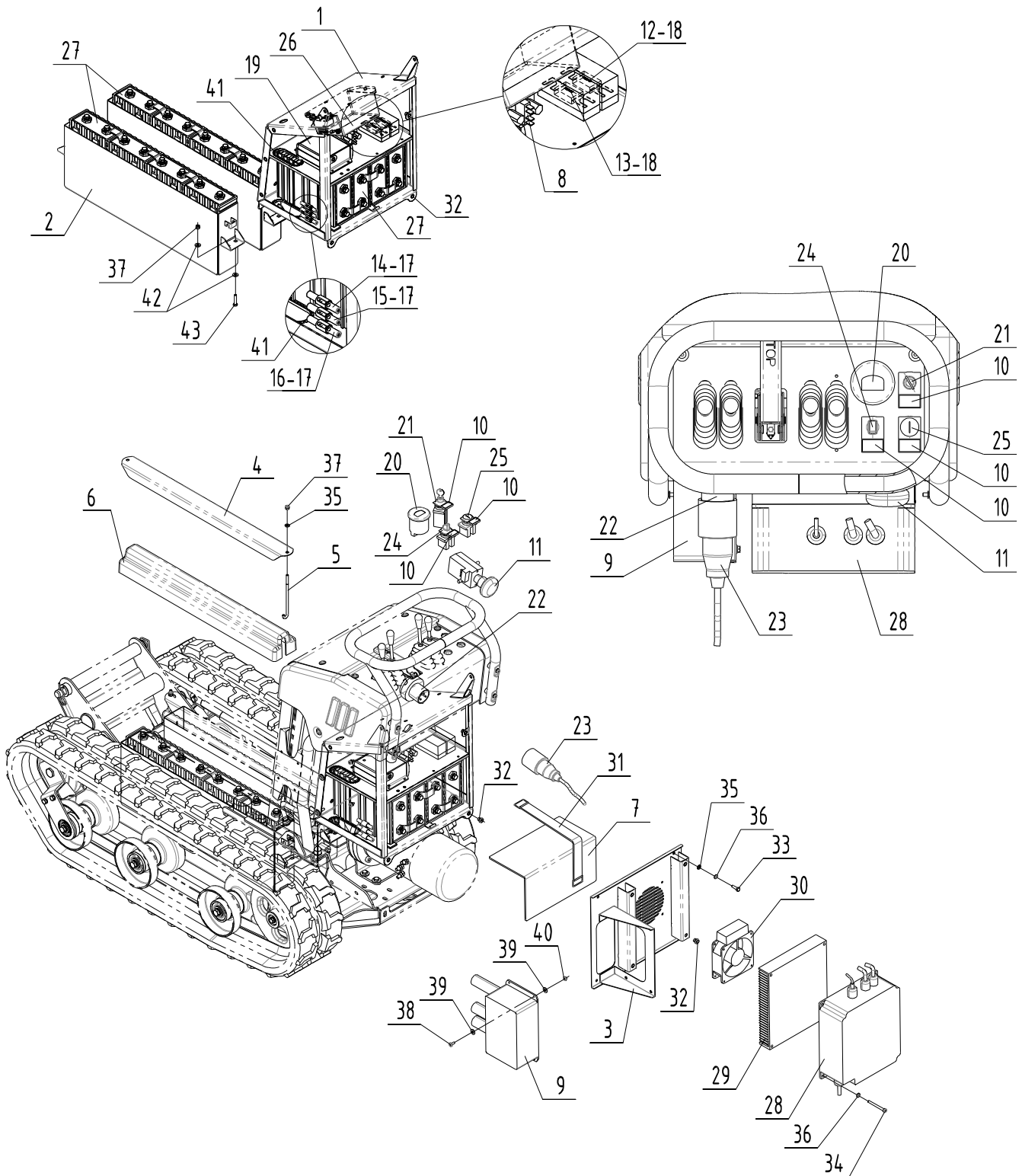
6



SECTION 7
SEZIONE 7

OPTIONAL ACCESSORIES
ACCESSORI OPZIONALI

KATO IMER S.p.A.



KEY No.	S	PART No.	DESCRIPTION	Q'TY	CH.	SERIAL No.	REMARKS
0		3050409000	Electric System Ass'y <i>Montaggio Impianto Elettrico</i>	1		MZ000010 ~ *000024	
1		2050402032	* Electric System Box <i>Box Componenti Elettrici</i>	1		MZ000010 ~ *000024	
2		2050402036	* Battery Box <i>Scatola batteria</i>	2		MZ000010 ~ *000024	
3		2050402037	* Charger bracket <i>Supporto caricabatterie</i>	1		MZ000010 ~ *000024	
4		2050401113	* Batteries Bracket <i>Staffa Batterie Anteriori</i>	2		MZ000010 ~ *000024	
5		2050404045	* Batteries Tie Rod <i>Tirante Batterie</i>	4		MZ000010 ~ *000024	
6		2050410006	* Batteries Cover <i>Coperchio Batterie Anteriori</i>	2		MZ000010 ~ *000024	
7		2050410012	* Rear Batteries Cover <i>Protezione Posteriore Batterie</i>	1		MZ000010 ~ *000024	
8		1170000000	* Contactor <i>Contattore</i>	1		MZ000010 ~ *000024	SW 180
9		1170000004	* Equalizer BMS <i>Equalizzatore BMS</i>	1		MZ000010 ~ *000024	SCA 12
10		1170000005	* Plate Support <i>Portatarghetta</i>	3		MZ000010 ~ *000024	
11		1170000010	* Safety Button <i>Pulsante Sicurezza</i>	1		MZ000010 ~ *000024	SD200
12		1170400002	* Fuse <i>Fusibile FT2040</i>	1		MZ000010 ~ *000024	40A 80V
13		1170400003	* Fuse <i>Fusibile FT2125</i>	1		MZ000010 ~ *000024	125A 80V
14		1170400004	* Fuse <i>Fusibile 5x20</i>	1		MZ000010 ~ *000024	4A 250V
15		1170400006	* Fuse <i>Fusibile 5x20</i>	1		MZ000010 ~ *000024	1A 250V
16		1170400013	* Fuse <i>Fusibile 5x20</i>	1		MZ000010 ~ *000024	0,5A 250V
17		1170400005	* Fuse Box <i>Portafusibile Cilindrico 5x20</i>	3		MZ000010 ~ *000024	
18		1170400007	* Fuse Box <i>Portafusibili</i>	2		MZ000010 ~ *000024	FP+CP1020
19		1170000009	* Circuit Board <i>Scheda Elettronica</i>	1		MZ000010 ~ *000024	
20		1170710001	* Display <i>Display</i>	1		MZ000010 ~ *000024	MOD. 3100
21		1170720000	* Key Switch <i>Interruttore a Chiave</i>	1		MZ000010 ~ *000024	
22		1170800012	* Plug <i>Spina Flangia 2P+T 16A 240V 6H IP67</i>	1		MZ000010 ~ *000024	
23		1170800018	* Plug <i>Presa 2P+T 16A 240V</i>	1		MZ000010 ~ *000024	
24		1171100002	* Speed Selector <i>Selettore Velocità</i>	1		MZ000010 ~ *000024	
25		1171100003	* Start Button <i>Pulsante Accensione</i>	1		MZ000010 ~ *000024	
26		1171200000	* Controller <i>Controllore Azionamento</i>	1		MZ000010 ~ *000024	MOD.1243-4224
27		1180500003	* Batteries <i>Batterie</i>	12		MZ000010 ~ *000024	TS-LYP90AHA
28		1180500004	* Batteries Charger <i>Caricabatterie</i>	1		MZ000010 ~ *000024	MOD.SG6
29		1180500007	* Dissipator <i>Dissipatore</i>	1		MZ000010 ~ *000024	
30		1180500008	* Fan <i>Ventola Raffreddamento</i>	1		MZ000010 ~ *000024	
31		1220000001	* Belt <i>Cinghia Elastica</i>	1		MZ000010 ~ *000024	
32		1081401006	* Threaded Insert <i>Inserito Filettato</i>	14		MZ000010 ~ *000024	M6

NOTE

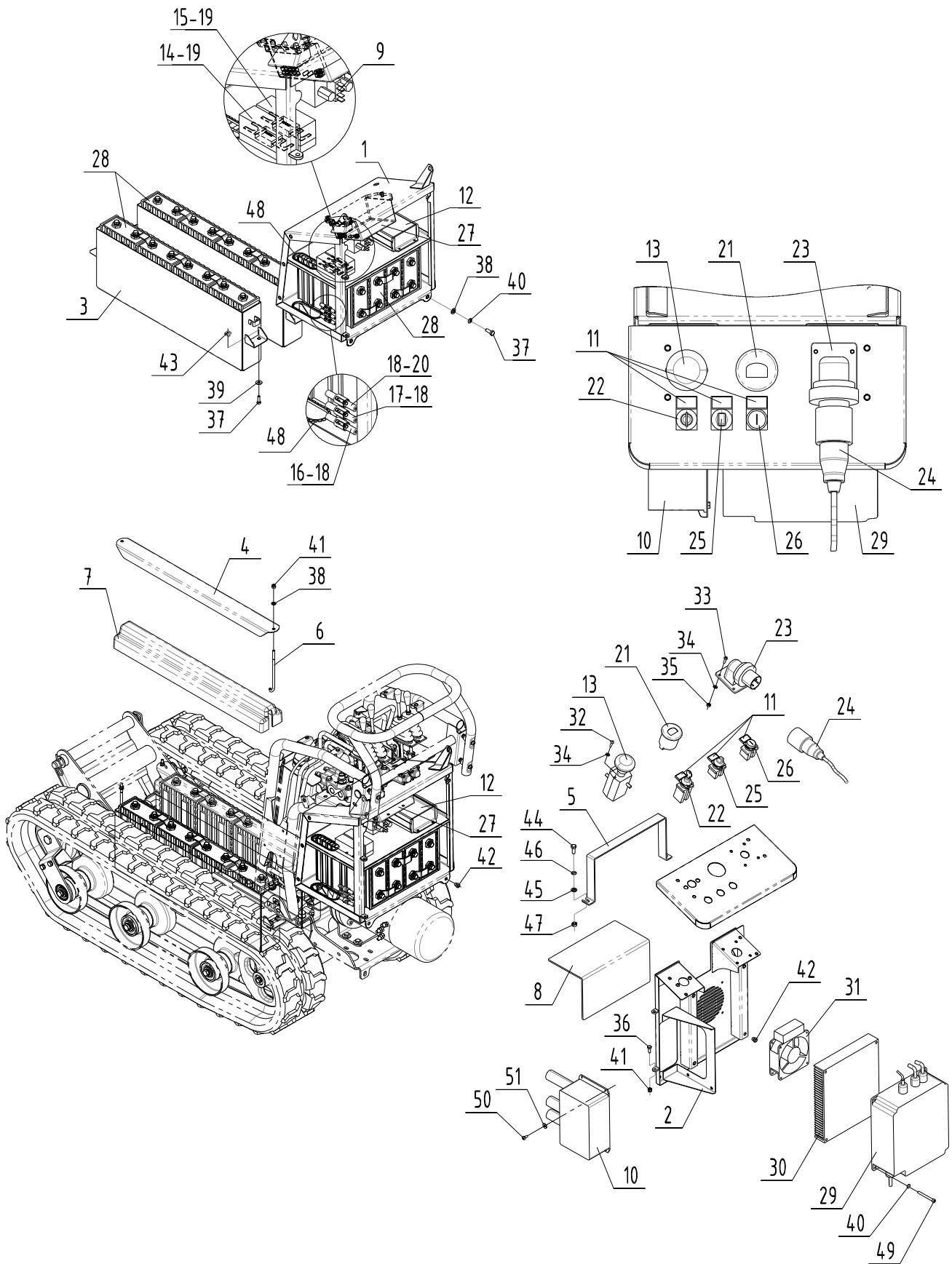
07-01-a(p1)



KEY		PART No.	DESCRIPTION	Q'TY	CH.	SERIAL No.	REMARKS
No.	S						
33		1222006	* Bolt <i>Vite TE</i>	4		MZ000010 ~ *000024	M6x16
34		1222241	* Bolt <i>Vite TCEI</i>	4		MZ000010 ~ *000024	M6x60
35		1224070	* Washer, Flat <i>Rosetta Piana</i>	8		MZ000010 ~ *000024	M6
36		1224791	* Washer, Spring <i>Rosetta Grower</i>	8		MZ000010 ~ *000024	M6
37		1223915	* Nut <i>Dado Autobloccante</i>	8		MZ000010 ~ *000024	M6
38		1222412	* Bolt <i>Vite TCEI</i>	4		MZ000010 ~ *000024	M5x12
39		1224040	* Washer, Flat <i>Rosetta Piana</i>	8		MZ000010 ~ *000024	D.5x15
40		1223246	* Nut <i>Dado</i>	4		MZ000010 ~ *000024	M5
41		1190400013	* Fairlead <i>Pas sacavo</i>	2		MZ000010 ~ *000024	DX2C
42		1224074	* Washer, Flat <i>Rosetta Piana</i>	8		MZ000010 ~ *000024	D.6x18
43		1222011	* Bolt <i>Vite TE</i>	4		MZ000010 ~ *000024	M6x25

NOTE

07-01-a(p2)



KEY No.	S	PART No.	DESCRIPTION	Q'TY	CH.	SERIAL No.	REMARKS
0		3050409000	Electric System Ass'y <i>Montaggio Impianto Elettrico</i>	1		MZ000025 ~	
1		2050402039	* Electric System Box <i>Box Componenti Elettrici</i>	1		MZ000025 ~	
2		2050402040	* Battery Charger Support <i>Supporto Carica Batterie</i>	1		MZ000025 ~	
3		2050402041	* Batteries Boxes <i>Vasca Batterie</i>	2		MZ000025 ~	
4		2050401113	* Batteries Bracket <i>Staffa Batterie Anteriori</i>	2		MZ000025 ~	
5		2050401167	* Batteries Bracket <i>Staffa Batterie Posteriori</i>	1		MZ000025 ~	
6		2050404056	* Batteries Tie Rod <i>Tirante Batterie</i>	4		MZ000025 ~	
7		2050410006	* Batteries Cover <i>Coperchio Batterie Anteriori</i>	2		MZ000025 ~	
8		2050410012	* Rear Batteries Cover <i>Protezione Posteriore Batterie</i>	1		MZ000025 ~	
9		1170000000	* Contactor <i>Contattore</i>	1		MZ000025 ~	SW 180
10		1170000004	* Equalizer BMS <i>Equalizzatore BMS</i>	1		MZ000025 ~	SCA 12
11		1170000005	* Plate Support <i>Portatarghetta</i>	3		MZ000025 ~	
12		1170000009	* Circuit Board <i>Scheda Elettronica</i>	1		MZ000025 ~	
13		1170000010	* Safety Button <i>Pulsante Sicurezza</i>	1		MZ000025 ~	SD200
14		1170400002	* Fuse <i>Fusibile FT2040</i>	1		MZ000025 ~	40A 80V
15		1170400003	* Fuse <i>Fusibile FT2125</i>	1		MZ000025 ~	125A 80V
16		1170400004	* Fuse <i>Fusibile 5x20</i>	1		MZ000025 ~	4A 250V
17		1170400006	* Fuse <i>Fusibile 5x20</i>	1		MZ000025 ~	1A 250V
18		1170400005	* Fuse Box <i>Portafusibile Cilindrico 5x20</i>	3		MZ000025 ~	
19		1170400007	* Fuse Box <i>Portafusibili</i>	2		MZ000025 ~	FP+CP1020
20		1170400013	* Fuse <i>Fusibile 5x20</i>	1		MZ000025 ~	0,5A 250V
21		1170710001	* Display <i>Display</i>	1		MZ000025 ~	MOD. 3100
22		1170720000	* Key Switch <i>Interruttore a Chiave</i>	1		MZ000025 ~	
23		1170800017	* Plug <i>Spina Flangia 2P+T 16A 240V 6H IP67</i>	1		MZ000025 ~	
24		1170800018	* Plug <i>Presa 2P+T 16A 240V</i>	1		MZ000025 ~	
25		1171100002	* Speed Selector <i>Selettore Velocità</i>	1		MZ000025 ~	
26		1171100003	* Start Button <i>Pulsante Accensione</i>	1		MZ000025 ~	
27		1171200000	* Controller <i>Controllore Azionamento</i>	1		MZ000025 ~	MOD.1243-4224
28		1180500003	* Batteries <i>Batterie</i>	12		MZ000025 ~	TS-LYP90AHA
29		1180500004	* Batteries Charger <i>Caricabatterie</i>	1		MZ000025 ~	MOD.SG6
30		1180500007	* Dissipator <i>Dissipatore</i>	1		MZ000025 ~	
31		1180500008	* Fan <i>Ventola Raffreddamento</i>	1		MZ000025 ~	
32		1040205012	* Bolt <i>Vite TBEI</i>	2		MZ000025 ~	M5x12

NOTE

07-01-b(p1)



KEY		PART No.	DESCRIPTION	Q'TY	CH.	SERIAL No.	REMARKS
No.	S						
33		3292728	* Bolt <i>Vite TCBC</i>	4		MZ000025 ~	M5x20
34		3242338	* Washer, Flat <i>Rosetta Piana</i>	6		MZ000025 ~	M5
35		1223246	* Nut <i>Dado</i>	4		MZ000025 ~	M5
36		1222006	* Bolt <i>Vite TE</i>	2		MZ000025 ~	M6x16
37		1222009	* Bolt <i>Vite TE</i>	11		MZ000025 ~	M6x20
38		1224070	* Washer, Flat <i>Rosetta Piana</i>	7		MZ000025 ~	M6
39		1224074	* Washer, Flat <i>Rosetta Piana</i>	8		MZ000025 ~	D.6x18
40		1224791	* Washer, Spring <i>Rosetta Grower</i>	7		MZ000025 ~	M6
41		1223915	* Nut <i>Dado Autobloccante</i>	6		MZ000025 ~	D.6x18
42		1081401006	* Threaded Insert <i>Inserto Filettato</i>	9		MZ000025 ~	M6
43		1081211008	* Nut <i>Dado in Gabbia</i>	8		MZ000025 ~	M8
44		1010908020	* Bolt <i>Vite TECF</i>	2		MZ000025 ~	M8x20
45		1224083	* Washer, Flat <i>Rosetta Piana</i>	2		MZ000025 ~	M8
46		1224794	* Washer, Spring <i>Rosetta Grower</i>	2		MZ000025 ~	M8
47		1223570	* Nut <i>Dado</i>	2		MZ000025 ~	M8
48		1190400013	* Fairlead <i>Passacavo</i>	2		MZ000025 ~	DX2C
49		1222241	* Bolt <i>Vite TCEI</i>	4		MZ000025 ~	M6x60
50		1222412	* Bolt <i>Vite TCEI</i>	4		MZ000025 ~	M5x12
51		1224040	* Washer, Flat <i>Rosetta Piana</i>	4		MZ000025 ~	D.5x15

NOTE

07-01-b(p2)



SECTION 8
SEZIONE 8

PARTS INDEX
INDICE DELLE PARTI

KATO IMER S.p.A.

PARTS No.	Sh. No. Key No	PARTS No.	Sh. No. Key No	PARTS No.	Sh. No. Key No.	PARTS No.	Sh. No. Key No
1010908020	0701 B 44	1170000004	0701 B 10	1220410050	0101 23	1224040	0701 A 39
1040106025	0501 A 15	1170000005	0701 A 10	1220608	0301 12	1224040	0701 B 51
1040106025	0501 B 15	1170000005	0701 B 11	1220615	0301 52	1224070	0301 44
1040205012	0701 B 32	1170000009	0701 B 12	1220625	0202 22	1224070	0501 A 5
1081211008	0701 B 43	1170000009	0701 A 19	1220625	0301 9	1224070	0501 B 5
1081401006	0501 A 3	1170000010	0701 A 11	1220625	0301	1224070	0701 A 35
1081401006	0501 B 3	1170000010	0701 B 13	1221153	0301 36	1224070	0701 B 38
1081401006	0701 A 32	1170101000	0401 1	1221277	0301 11	1224074	0501 A 16
1081401006	0701 B 42	1170400002	0701 A 12	1222002	0501 A 29	1224074	0501 B 16
1090500010	0101 22	1170400002	0701 B 14	1222002	0501 B 30	1224074	0701 B 39
1090600025	0202 15	1170400003	0701 A 13	1222006	0301 41	1224074	0701 A 42
1100123020	0102 5	1170400003	0701 B 15	1222006	0701 A 33	1224083	0101 16
1100123025	0102 14	1170400004	0701 A 14	1222006	0701 B 36	1224083	0301 47
1101130000	0102 8	1170400004	0701 B 16	1222009	0701 B 37	1224083	0501 A 32
1101130001	0202 14	1170400005	0701 A 17	1222011	0701 A 43	1224083	0501 B 33
1101130002	0201 11	1170400005	0701 B 18	1222013	0301 42	1224083	0701 B 45
1110110025	0202 16	1170400006	0701 A 15	1222030	0301 45	1224085	0401 12
1110800008	0501 A 25	1170400006	0701 B 17	1222034	0201 12	1224103	0101 20
1110800008	0501 B 26	1170400007	0701 A 18	1222034	0401 13	1224103	0201 3
1110910016	0202 18	1170400007	0701 B 19	1222034	0501 A 31	1224103	0201 16
1120403003	0101 10	1170400013	0701 A 16	1222034	0501 B 32	1224103	0202 11
1120820100	0501 A 26	1170400013	0701 B 20	1222037	0101 15	1224103	0401 7
1120820100	0501 B 27	1170630000	0301 54	1222059	0201 14	1224103	0501 A 8
1120825300	0501 A 27	1170710001	0701 A 20	1222061	0101 18	1224103	0501 B 8
1120825300	0501 B 28	1170710001	0701 B 21	1222061	0102 11	1224104	0101 21
1120825303	0501 A 28	1170720000	0701 A 21	1222061	0501 A 6	1224104	0102 10
1120825303	0501 B 29	1170720000	0701 B 22	1222061	0501 B 6	1224104	0201 17
1130712017	0202 26	1170800012	0701 A 22	1222087	0202 8	1224104	0202 10
1130712018	0202 25	1170800017	0701 B 23	1222238	0501 A 4	1224780	0501 B 20
1130712019	0202 27	1170800018	0701 A 23	1222238	0501 B 4	1224791	0301 43
1130712020	0202 28	1170800018	0701 B 24	1222241	0701 A 34	1224791	0501 A 30
1130712021	0202 20	1171100002	0701 A 24	1222241	0701 B 49	1224791	0501 B 31
1130712022	0202 21	1171100002	0701 B 25	1222270	0401 5	1224791	0701 A 36
1130712023	0202 23	1171100003	0701 A 25	1222276	0401 6	1224791	0701 B 40
1130712024	0202 24	1171100003	0701 B 26	1222404	0201 2	1224794	0101 17
1130722014	0301 20	1171200000	0701 A 26	1222412	0501 A 19	1224794	0301 46
1130722016	0301 21	1171200000	0701 B 27	1222412	0701 A 38	1224794	0401 9
1130723005	0301 22	1171500000	0401 2	1222412	0701 B 50	1224794	0701 B 46
1130723006	0301 23	1171500001	0401 3	1222845	0501 B 19	1224801	0101 19
1130723007	0301 24	1180500003	0701 A 27	1222906	0202 9	1224801	0201 15
1140124200	0301 16	1180500003	0701 B 28	1222914	0101 25	1224801	0202 12
1140213300	0301 4	1180500004	0701 A 28	1223246	0701 B 35	1224801	0401 8
1140312200	0301 17	1180500004	0701 B 29	1223246	0701 A 40	1224801	0501 A 9
1140440001	0202 17	1180500007	0701 A 29	1223570	0201 13	1224801	0501 B 9
1140616000	0301 37	1180500007	0701 B 30	1223570	0301 48	1224803	0101 27
1140713200	0301 10	1180500008	0701 A 30	1223570	0401 11	1224982	0502 9
1140713300	0301 14	1180500008	0701 B 31	1223570	0501 A 33	1225744	0301 49
1141015002	0301 2	1190200000	0501 A 18	1223570	0501 B 34	1226458	0101 14
1141015003	0301 39	1190300003	0101 2	1223570	0701 B 47	1226474	0201 18
1150100005	0301 51	1190400013	0701 A 41	1223650	0101 24	1239464	0501 A 24
1150100009	0301	1190400013	0701 B 48	1223650	0201 4	1239464	0501 B 25
1150211012	0301 1	1190900009	0301 35	1223650	0202 13	1288971	0502 10
1150360004	0301 15	1220000001	0701 A 31	1223650	0401 10	2000007006	0502
1150510003	0301 19	1220019	0301 13	1223650	0501 A 7	2020007002	0502 1
1150620004	0301 7	1220019	0301	1223650	0501 B 7	2020807039	0201 20
1150620004	0601 1	1220136	0301 38	1223700	0101 26	2030807137	0502
1170000000	0701 A 8	1220138	0301 3	1223915	0501 A 21	2034207055	0201
1170000000	0701 B 9	1220140	0301 53	1223915	0701 A 37	2050201040	0101 13
1170000004	0701 A 9	1220300000	0301 34	1223915	0701 B 41	2050204001	0101 5

PARTS No.	Sh. No.	Key No	PARTS No.	Sh. No.	Key No	PARTS No.	Sh. No.	Key No.	PARTS No.	Sh. No.	Key No
2050204007	0102	6	2050404028	0101	12	3251846		0301			
2050204008	0301	32	2050404032	0201	8	3262192		0201	21		
2050204009	0301	33	2050404033	0201	9	3292381		0501	B 22		
2050206000	0102	4	2050404045	0701	A 5	3292728		0701	B 33		
2050206001	0101	6	2050404056	0701	B 6	3292730		0502	13		
2050207014	0502	5	2050407004	0502	3	4041000451		0601	2		
2050401019	0102	15	2050407008	0502	2	4041000452		0601	3		
2050401030	0501	A 13	2050407016	0502	4	4041000453		0601	4		
2050401030	0501	B 13	2050407018	0502	6	4041000454		0601	5		
2050401113	0701	A 4	2050407019	0502	7	4041000456		0601	7		
2050401113	0701	B 4	2050407019	0502		4041000490		0201	19		
2050401125	0201	10	2050407022	0502	8	4041000490		0202	19		
2050401134	0301	31	2050407023	0502	14	4041000491		0601	6		
2050401135	0401	4	2050408001	0301	50	4041000492		0101	3	1	
2050401161	0501	B 18	2050408002	0202	6	4041000492		0102	0		
2050401167	0701	B 5	2050408003	0301	30	4041000493		0101	3		
2050402001	0101	1	2050408007	0301	25	4041000493		0102	0	1	
2050402002	0102	13	2050408008	0301	26	4041000498		0301	19	1	
2050402003	0201	6	2050408009	0301	27	4041000506		0301	55		
2050402004	0102	2	2050408010	0301	28	4041000506		0301	55		
2050402005	0102	1	2050408018	0301		4041000516		0301			
2050402006	0501	A 14	2050408019	0202		4041000523		0301	50	1	
2050402006	0501	B 14	2050410001	0501	B 10	4041000524		0202	6	1	
2050402007	0501	A 1	2050410002	0501	A 11	4041000526		0301			
2050402007	0501	B 1	2050410002	0501	B 11	4041000527		0202			
2050402009	0101	8	2050410003	0501	A 12	5180301000		0201	0		
2050402010	0101	7	2050410003	0501	B 12	5180301001		0202	0		
2050402011	0202	1	2050410004	0501	A 10	6050202001		0102	3		
2050402012	0202	2	2050410006	0701	A 6	6050402001		0101	4		
2050402013	0202	3	2050410006	0701	B 7	6050402001		0102	12		
2050402014	0202	4	2050410012	0701	A 7						
2050402015	0202	5	2050410012	0701	B 8						
2050402016	0501	A 2	2050410013	0501	B 21						
2050402016	0501	B 2	3050205002	0301	5						
2050402017	0101	11	3050205003	0301	6						
2050402018	0201	1	3050401001	0501	A 0						
2050402023	0301	18	3050401001	0501	B 0						
2050402028	0102	1	3050401002	0201	0					1	
2050402029	0201	7	3050403002	0401	0						
2050402032	0701	A 1	3050405004	0301	0					2	
2050402036	0701	A 2	3050405008	0301	0						
2050402037	0701	A 3	3050405009	0301	0					1	
2050402038	0501	A 17	3050405009	0401	0					1	
2050402039	0701	B 1	3050407001	0501	A 0					1	
2050402040	0701	B 2	3050407001	0501	B 0					1	
2050402041	0701	B 3	3050408000	0501	A 0					2	
2050402042	0501	B 17	3050408000	0501	B 0					2	
2050403002	0501	A 22	3050409000	0701	A 0						
2050403002	0501	B 23	3050409000	0701	B 0						
2050403007	0501	A 23	3050411003	0502	0						
2050403007	0501	B 24	3206224	0301	40						
2050403027	0102	1	3242338	0501	A 20						
2050403028	0102	2	3242338	0701	B 34						
2050404006	0102	9	3250778	0201	5						
2050404007	0102	16	3250778	0501	A 34						
2050404008	0102	7	3250778	0501	B 35						
2050404011	0301	29	3251653	0502	11						
2050404021	0202	7	3251657	0502	12						
2050404026	0101	9	3251846	0301	8						