



TABLE 1 Mixer drum and paddle assembly

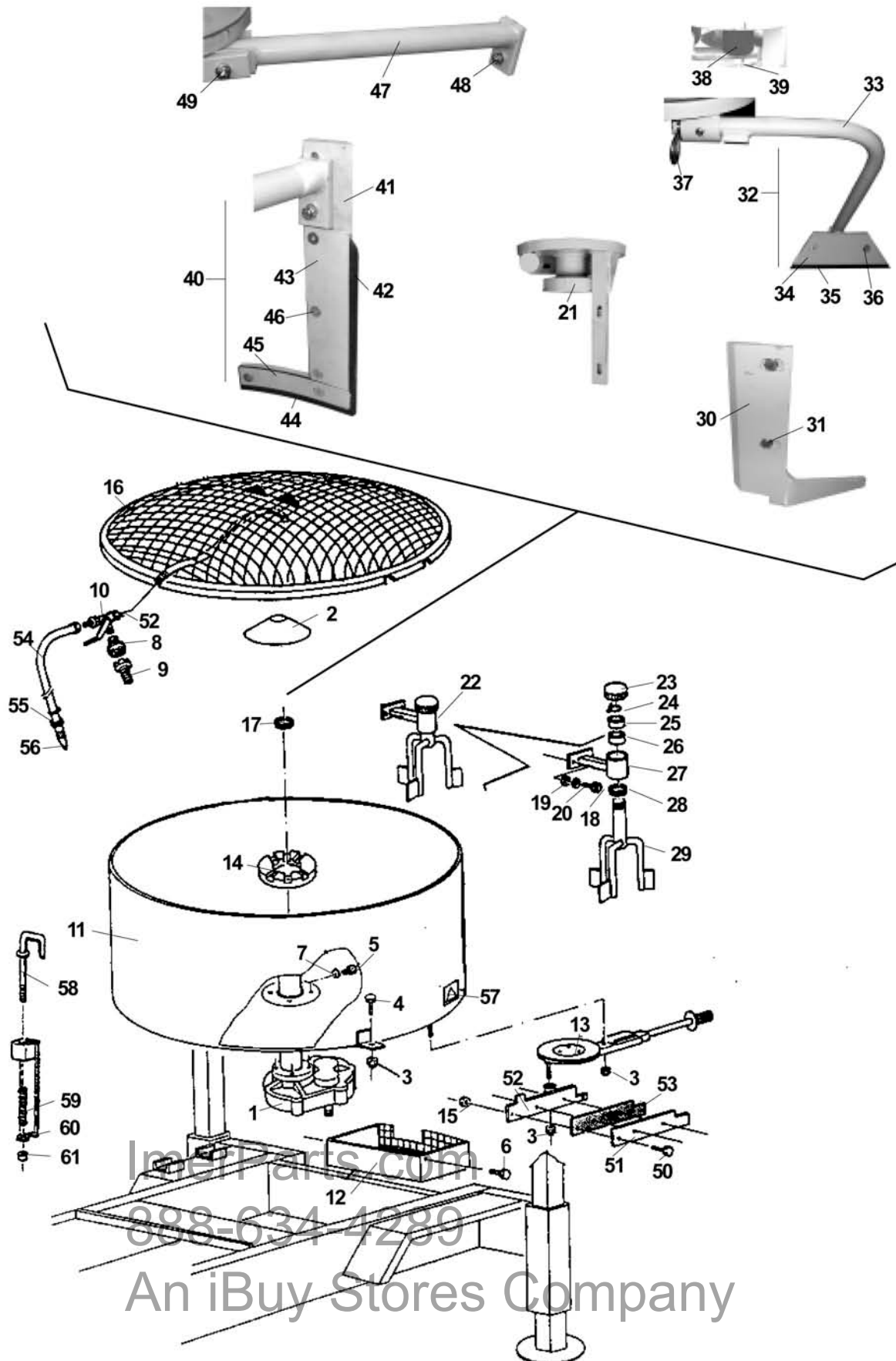


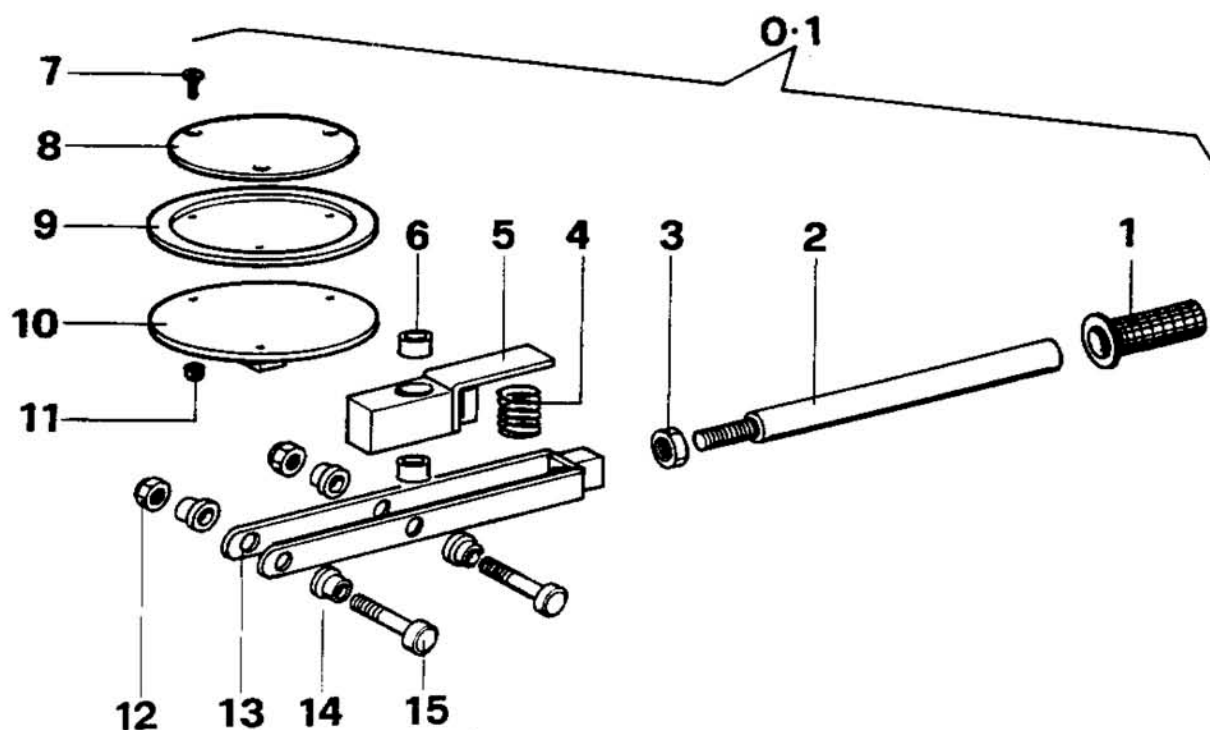


TABLE 1 Mixer drum and paddle assembly

| Ref. | P.n. | Description | NOTES |
|------|-----------|-------------------------------|-------|
| 1 | 3295858 | REDUCTION GEAR | |
| 2 | 3295859 | MUSHROOM | |
| 3 | | NUT | |
| 4 | | BOLT | |
| 5 | 3295860 | BOLT | |
| 6 | | BOLT | |
| 7 | | WASHER | |
| 8 | 2226800 | CONNECTOR FEMALE | |
| 9 | 2226805 | CONNECTOR MALE | |
| 10 | 3295861 | BALL VALVE | |
| 11 | K1016990V | DRUM | |
| 12 | 3295862 | DISCHARGE SAFETY GRATE | |
| 13 | 2250748 | DISCHARGE OPENING | |
| 14 | 3295863 | DRUM COLLAR | |
| 15 | 18900600 | LOCK-NUT | |
| 16 | 3295864 | DRUM SAFETY GRATE | |
| 17 | 3295865 | SEAL | |
| 18 | 95203550 | BOLT | |
| 19 | 2224900 | WASHER | |
| 20 | | WASHER | |
| 21 | 3295866 | MIXER HEAD | |
| 22 | 3295867 | TRIDENT PADDLE | |
| 23 | 2257710 | CAP | |
| 24 | 01400900 | CIRCLIP | |
| 25 | 3206003 | CIRCLIP | |
| 26 | 17504001 | BEARING | |
| 27 | 3295868 | SUPPORT ARM - TRIDENT | |
| 28 | 3295869 | SEAL | |
| 29 | K1017052 | TRIDENT ONLY | |
| 30 | 3295870 | INNER PADDLE | |
| 31 | 95004250 | BOLT | |
| - | 18500900 | NUT | |
| - | 68701101 | WASHER | |
| - | 2224900 | WASHER | |
| 32 | 3295871 | FLOATING PADDLE (COMPLETE) | |
| 33 | 3295872 | FLOATING PADDLE | |
| 34 | 3295873 | FLOATING PLATE | |
| 35 | 3295874 | FLOATING RUBBER | |
| 36 | 18500900 | NUT | |
| | 68701001 | WASHER | |
| | 95501510 | BOLT | |
| 37 | 15200710 | PIN | |
| 38 | L1003861 | AMMORT. | |
| 39 | 95203550 | BOLT | |
| | 2224900 | | |
| | 18602021 | NUT | |
| 40 | 3295875 | OUTER PADDLE (COMPLETE) | |
| 41 | K1016649 | OUTER PADDLE | |
| 42 | 3295876 | VERTICAL RUBBER OUTER PADDLE | |
| 43 | 3295877 | VERTICAL PLATE OUTER PADDLE | |
| 44 | 3295878 | ORIZONTAL RUBBER OUTER PADDLE | |
| 45 | 3295879 | ORIZONTAL PLATE OUTER PADDLE | |
| 46 | 18500900 | NUT | |
| - | 68701001 | WASHER | |
| - | 95501520 | BOLT | |
| - | 95501510 | BOLT | |
| 47 | 3295880 | SUPPORTO OUTER PADDLE | |
| 48 | | BOLT | |
| | | | |
| 49 | 95203550 | BOLT | |
| | 18602021 | NUT | |
| | | | |
| 50 | 95001001 | BOLT | |
| 51 | 3295881 | PLATE | |
| 52 | 2253852 | PLATE | |
| 53 | 2247876 | RUBBER PLATE | |
| 54 | 2292356 | WATER TUBE | |
| 55 | 24700380 | HOSE CLAMP | |
| 56 | 2218069 | NOZZLE | |
| 57 | | ADHESIVE LABEL | |
| 58 | 2201918 | LEVER | |
| 59 | 2231234 | SPRING | |
| 60 | 2224640 | WASHER | |
| 61 | 2223929 | SELF LOCKING NUT | |



| TABLE 2 Dump gate | | | |
|-------------------|----------|--------------------|--------------|
| Ref. | P.n. | Description | NOTES |
| 0.1 | 2250748 | DUMP GATE COMPLETE | |
| 1 | 2288885 | GRIP | |
| 2 | 3201489 | ACTUATING ARM | |
| 3 | 2223807 | NUT | 5589 M16 |
| 4 | 18501550 | SPRING | |
| 5 | 2231301 | ACTUATOR | |
| 6 | 2209822 | BUSHING | |
| 7 | 95601500 | SCREW | TSP 963-6x25 |
| 8 | 2225033 | BASE PLATE | |
| 9 | 2292581 | SEAL | |
| 10 | 2253863 | BASE PLATE | |
| 11 | 18900600 | LOCK-NUT | M6 |
| 12 | 18801000 | LOCK-NUT | M10 |
| 13 | 2254015 | ACTUATOR FRAME | |
| 14 | 2209821 | BUSHING | |
| 15 | 2223006 | BOLT | |

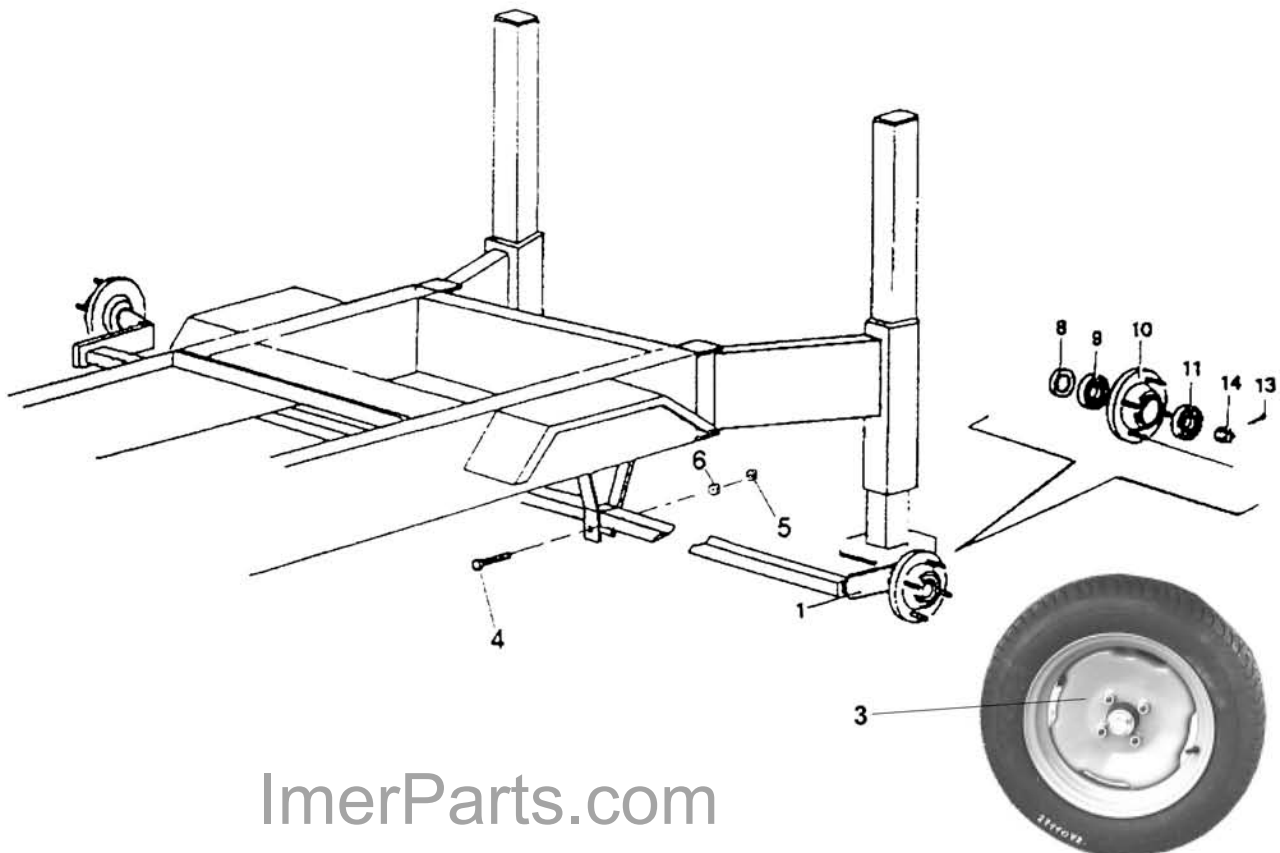


ImerParts.com
888-634-4289
An iBuy Stores Company



TABLE 3 Wheel and suspension assembly

| Ref. | P.n. | Description | NOTES |
|------|----------|------------------|-----------------|
| 1 | 3208128 | AXLE | |
| 3 | 3201790 | WHEEL (COMPLETE) | |
| 4 | 95203400 | BOLT | 5737 M12X100 Z |
| 5 | 3207392 | SELF-LOCKING NUT | METALBLOC M12 |
| 6 | 68701101 | WASHER | 6593 D.12X25 Z |
| 8 | 2227063 | SEAL RING | |
| 9 | 2204540 | BEARING | |
| 10 | 2201570 | FLANGE | |
| 11 | 2204483 | BEARING | |
| 12 | 2225720 | STUD BOLT | M 12 |
| 13 | 2226450 | SLIT PIN | 1336 - 4x40 |
| 14 | 2223890 | NUT | 5594 MB18 BASSO |

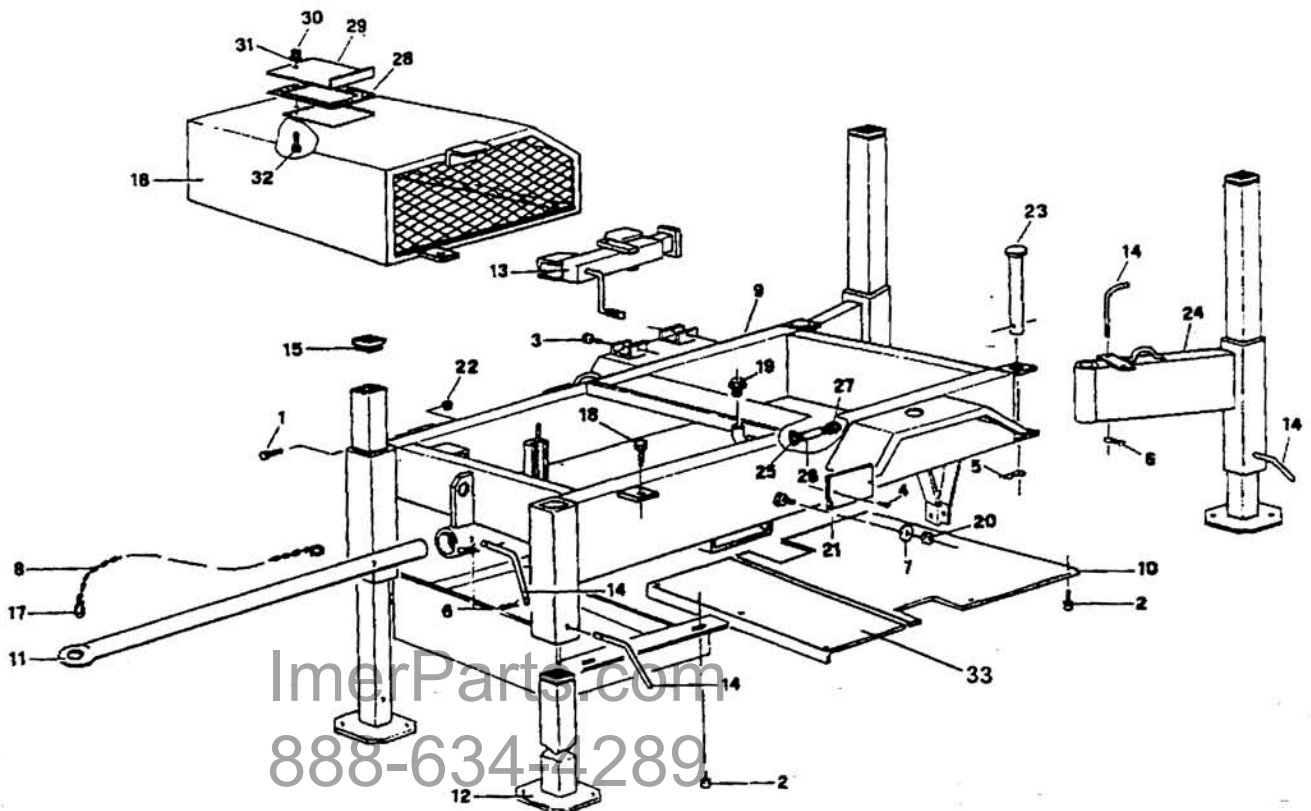


ImerParts.com
888-634-4289
An iBuy Stores Company



TABLE 4 Frame

| Ref. | P.n. | Description | NOTES |
|------|-----------|------------------|-------|
| 1 | | BOLT | |
| 2 | | BOLT | |
| 3 | | BOLT | |
| 4 | | RMET | |
| 5 | | SLIP PIN | |
| 6 | | SLIP PIN | |
| 7 | | WASHER | |
| 8 | | CHAIN | |
| 9 | K1017004V | FRAME | |
| 10 | L1004851 | PROTECTION | |
| 11 | 2255211V | TOW BAR | |
| 12 | 3295882 | TELESCOPIC FOOT | |
| 13 | 3295883 | JACK | |
| 14 | | ANCHOR PIN | |
| 15 | | TERMINAL | |
| 16 | 2259525V | CASING | |
| 17 | | SPRING CATCH | |
| 18 | | SCREW | |
| 19 | | PLUG | |
| 20 | | NUT | |
| 21 | | I.D. PLATE | |
| 22 | | INUT | |
| 23 | | PIN | |
| 24 | K1016992V | MOBILE LEG RIGHT | |
| - | K1017030V | MOBILE LEG LEFT | |
| 25 | | CLIP | |
| 26 | | RUBBER HOSE | |
| 27 | | NIPPLES | |
| 28 | | GASKET | |
| 29 | 2259537V | COVER | |
| 30 | | SELF LOCKING NUT | |
| 31 | | WASHER | |
| 32 | | SCREW | |
| 33 | | PROTECTION | |



ImerParts.com
888-634-1289
An iBuy Stores Company



TABLE 5 Gearbox

| Ref. | P.n. | Description | NOTES |
|------|----------|--------------------|----------|
| 1 | 2201163 | DRVE SHAFT | |
| 2 | 2208498 | WASHER | |
| 3 | 2215093 | GEAR BOX | |
| 4 | 2258008 | DRVE SHAFT HOUSING | |
| 5 | 2293985 | TAP | |
| 6 | 6930120 | WASHER A15 | UNI 1751 |
| 7 | 95005000 | BOLT | M14X40 |
| 8 | 17503050 | BEARING | |
| 9 | 17509060 | BEARING | |
| 10 | 17551450 | BEARING | |
| 11 | 17505100 | BEARING | |
| 12 | L1003852 | CROWN GEAR Z76 | |
| 13 | L1003853 | PINION GEAR Z13 | |
| 14 | L1003854 | PINION GEAR Z16 | |
| 15 | L1004843 | CROWN GEAR Z58 | |
| 16 | 17505101 | BEARING | |
| 17 | 01000755 | SEAL | |
| 18 | 2229641 | KEY | 14X14X44 |
| - | 41503590 | KEY | |
| 19 | 41501260 | KEY | 8X7X45 |
| 20 | 41503060 | KEY | 12X8X22 |
| 21 | 94701520 | BOLT | M6X16 |
| 22 | 94703300 | BOLT | M8X30 |

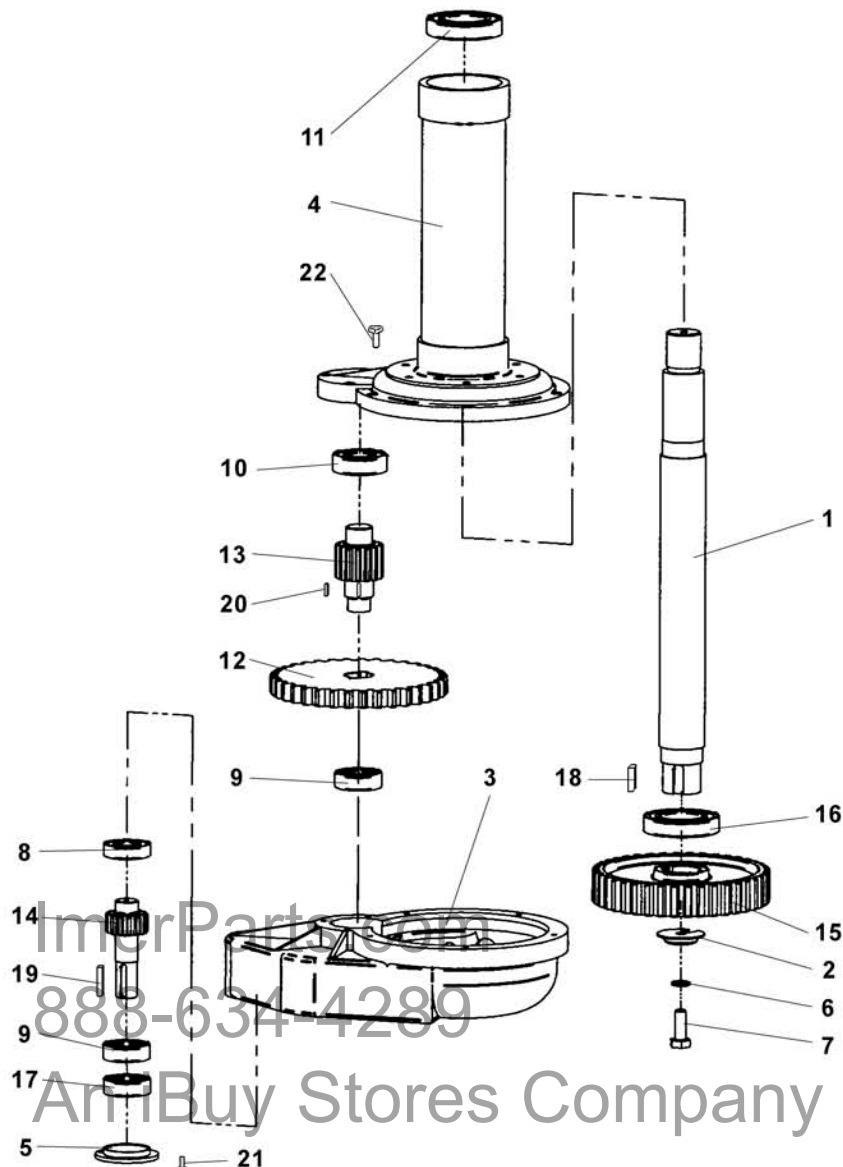




TABLE 7 ASSEMBLY OF MOTOR 400V 60HZ (1194625)

| TABLE 7 ASSEMBLY OF MOTOR 400V 60Hz | | | |
|-------------------------------------|---------|----------------------|-------|
| Ref. | P.n. | Description | NOTES |
| 1 | | BOLT | |
| 2 | 3295885 | PULLEY | |
| 3 | 3295886 | BELT | |
| 4 | | CABLE CLAMP | |
| 5 | | PLUG | |
| 6 | | SWITCH | |
| 7 | | SREW | |
| 8 | | NUT | |
| 9 | | PROTECTION | |
| 10 | | SCREW | |
| 11 | | NUT | |
| 12 | | SCREW | |
| 13 | | WASHER | |
| 14 | | WASHER | |
| 15 | | NUT | |
| 16 | | SCREW | |
| 17 | | WASHER | |
| 18 | 3295887 | MOTOR MOUNTING PLATE | |
| 19 | 2205581 | PULLEY | |
| 20 | | ELECTRIC MOTOR | |
| 21 | | ADHESIVE LABEL | |
| 22 | | KEY | |
| 23 | | LIMIT SWITCH | |
| 24 | | WASHER | |
| 25 | | BOLT | |
| 26 | 3295884 | LIMIT SWITCH | |
| 27 | | BOLT | |
| 28 | | CABLE CLAMP | |

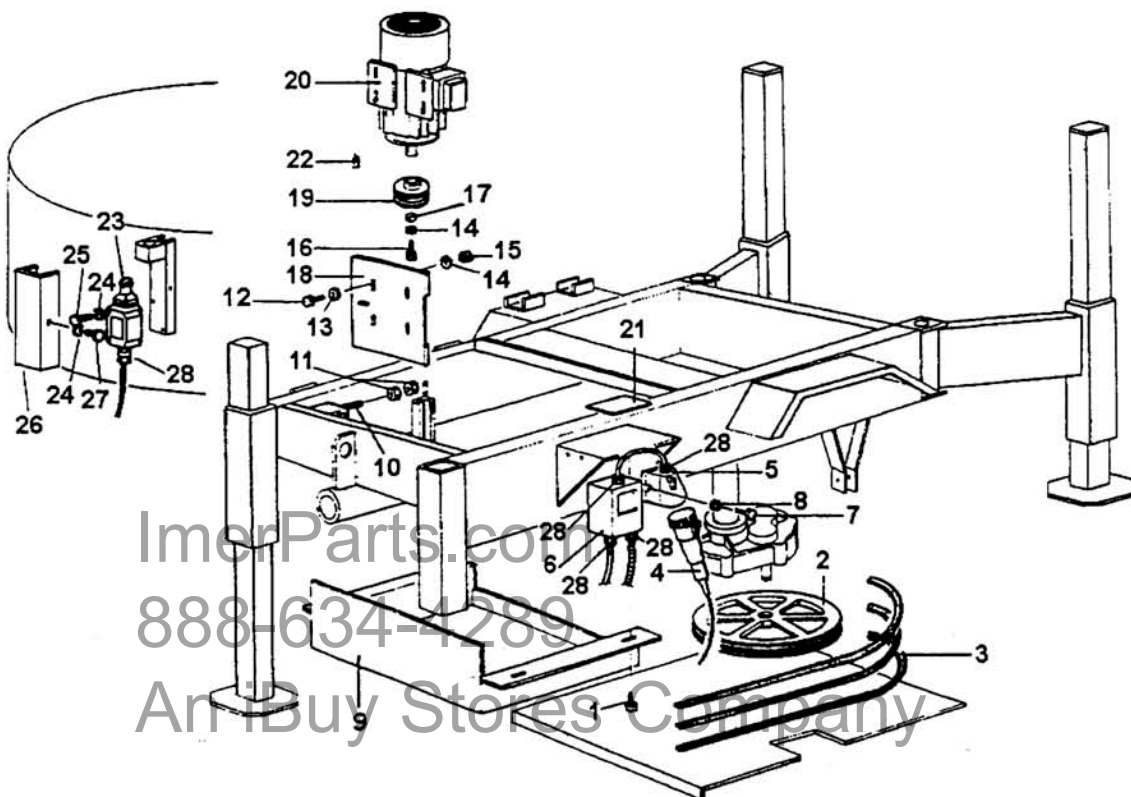




TABLE 8 Drive train Honda (1194620)

| TABLE 8 Drive train Honda | | | |
|---------------------------|-----------|-------------------------|-------|
| Ref. | P.n. | Description | NOTES |
| 1 | | WASHER | |
| 2 | | NUT | |
| 3 | | NUT | |
| 4 | | ACCELERATOR CABLE | |
| 5 | | SHEATH+FERRULE | |
| 6 | | ACCELERATOR | |
| 7 | | BOLT | |
| 8 | | NUT | |
| 9 | | WASHER | |
| 10 | | BOLT | |
| 11 | | NUT | |
| 12 | K1017027V | ENGINE MOUNTING PLATE | |
| 13 | | BOLT | |
| 15 | | MOTOR | |
| 16 | | BOLT | |
| 17 | | WASHER | |
| 18 | | BOLT | |
| 19 | | BOLT | |
| 20 | | SPACER | |
| 21 | 3295890 | PULLEY | |
| 22 | 3207172 | BELT | |
| 23 | | PROTECTION | |
| 24 | | CLUTCH | |
| 25 | | WASHER | |
| 26 | | BOLT | |
| 27 | | KEY | |
| 28 | | LIMIT SWITCH | |
| 29 | | WASHER | |
| 30 | | BOLT | |
| 31 | | SHEATH GROMMET | |
| 32 | | LIMIT SWITCH PROTECTION | |
| 33 | | BOLT | |
| 34 | | SHEATH | |
| 35 | | BOLT | |
| 36 | | CLAMP | |
| 37 | | NUT | |
| 38 | | NUT | |
| 39 | 2225796 | CLAMP | |

